

## KVMP 36/29-Z26

Cable gland circular, brass, DIN 89280, M36-Pg29



Products may differ in size, colour and appearance to those shown. If you require further information or customisation, please contact us directly.



<b>Material cable gland</b>	Brass
<b>Material sealing gasket</b>	EPDM
<b>Material earthing insert</b>	Brass chromium-plated
<b>Temp. range min</b>	-40 °C
<b>Temp. range max</b>	100 °C
<b>Protection class</b>	IP54
<b>Thread type</b>	PG
<b>Ø Connection thread D</b>	29
<b>Length screw-in thread L</b>	11 mm
<b>Ø cable diameter min</b>	24 mm
<b>Ø cable diameter max</b>	26,5 mm
<b>Key width SW</b>	36 mm
<b>Collar diameter (E)</b>	40 mm
<b>Total length TL</b>	56 mm
<b>Install. torques fitting</b>	15 N m
<b>Install. torques cap nut</b>	15 N m
<b>Surface</b>	Bright
<b>Order no. bright</b>	10010986
<b>Type</b>	KVMP 36/29-Z26
<b>Packing unit</b>	1
<b>Tariff number</b>	85369010
<b>EAN number</b>	4007685109864

23.05.2026

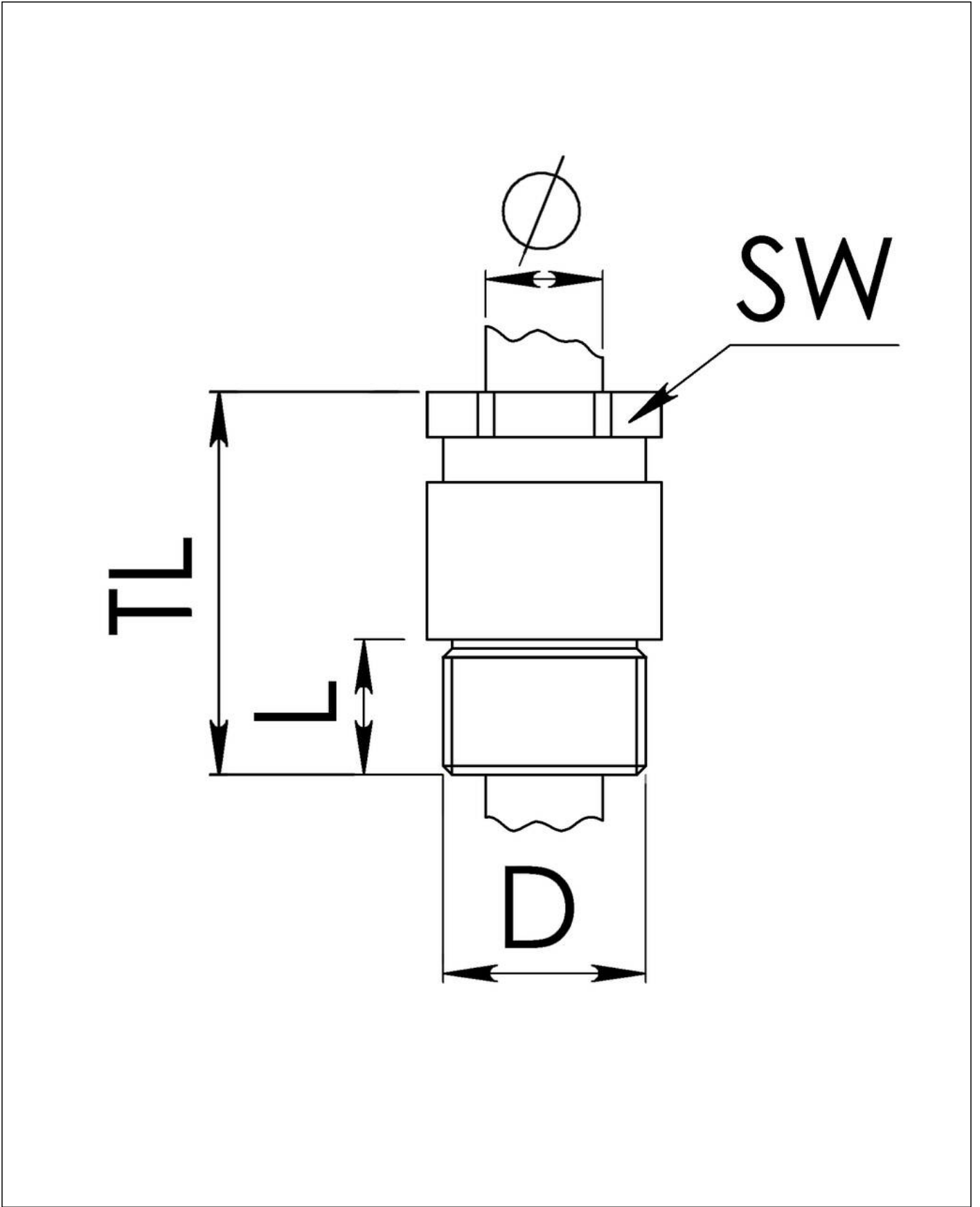
Your Contact:

**WISKA Hoppmann GmbH**

Kisdorfer Weg 28 · 24568 Kaltenkirchen · Germany

☎ +49-4191-508-0 · 📠 +49-4191-508-209

contact@wiska.de · www.wiska.com



Your Contact:  
**WISKA Hoppmann GmbH**  
Kisdorfer Weg 28 · 24568 Kaltenkirchen · Germany  
☎ +49-4191-508-0 · 📠 +49-4191-508-209  
contact@wiska.de · www.wiska.com