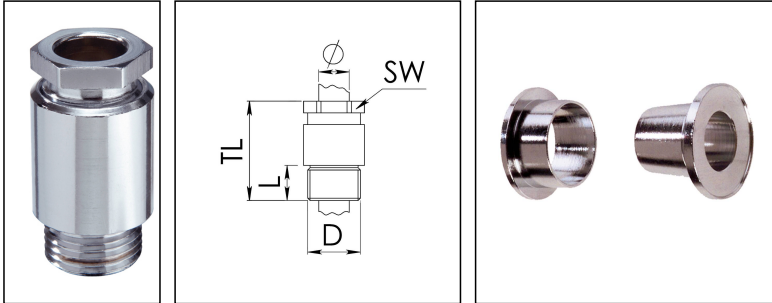


## KVMP 18/13,5-VG B/Cr

Cable gland, brass chromed-plated, earthing insert acc. to VG 88812, M18-Pg13,5



Products may differ in size, colour and appearance to those shown. If you require further information or customisation, please contact us directly.



<b>Material cable gland</b>	Brass chromium-plated
<b>Material earthing insert</b>	Brass chromium-plated
<b>Temp. range min</b>	-30 °C
<b>Temp. range max</b>	80 °C
<b>Protection class</b>	IP30
<b>Thread type</b>	PG
<b>Ø Connection thread D</b>	13,5
<b>Length screw-in thread L</b>	8 mm
<b>Ø cable diameter max</b>	12,5 mm
<b>Ø cable below cable shield max</b>	-10 mm
<b>Key width SW</b>	19 mm
<b>Collar diameter (E)</b>	22 mm
<b>Total length TL</b>	41 mm
<b>Surface</b>	Chromium-plated
<b>Order no. chrome-plated</b>	10011899
<b>Type</b>	KVMP 18/13,5-VG B/Cr
<b>Packing unit</b>	1
<b>Tariff number</b>	85369010
<b>EAN number</b>	4007685118996

23.05.2026

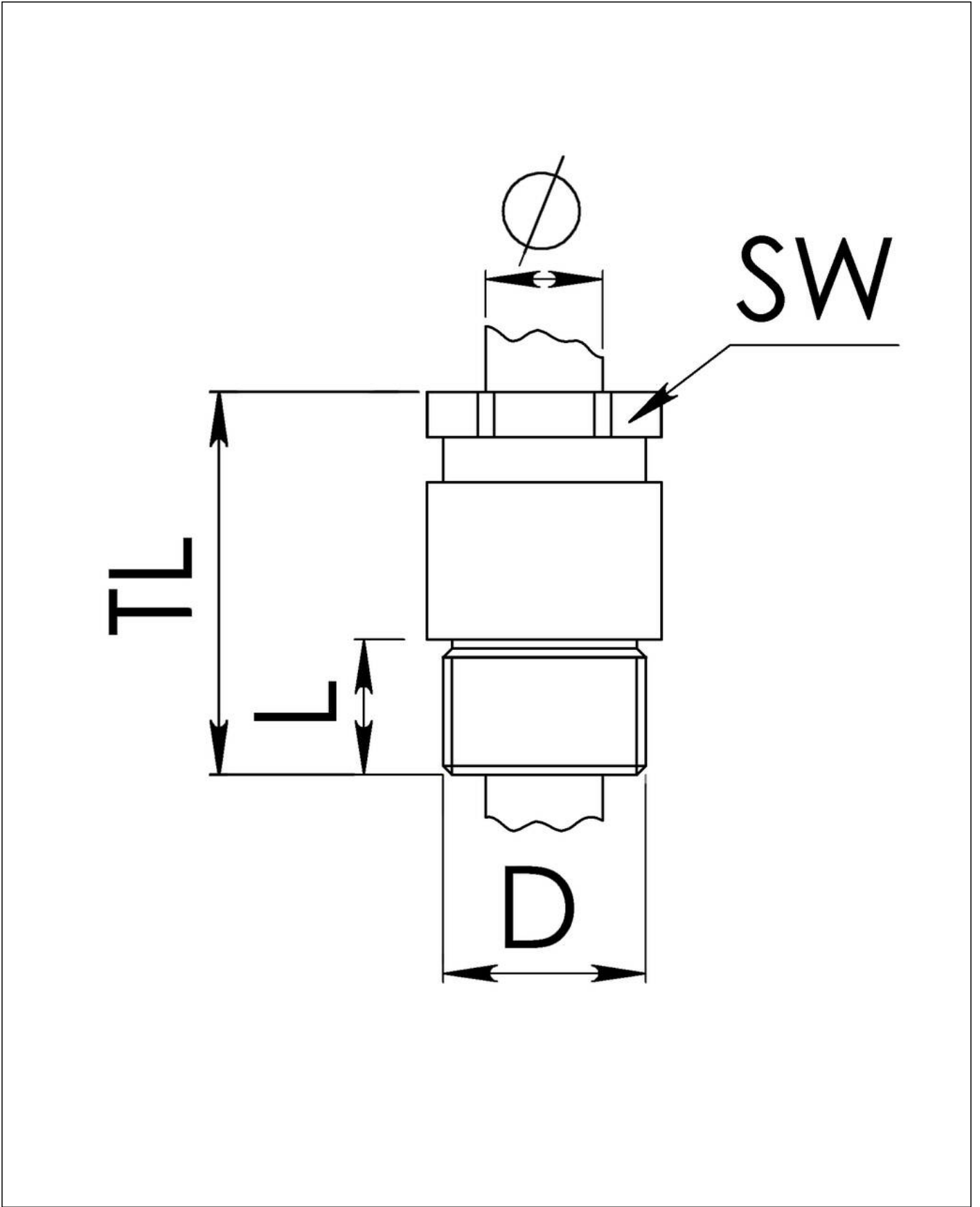
Your Contact:

**WISKA Hoppmann GmbH**

Kisdorfer Weg 28 · 24568 Kaltenkirchen · Germany

☎ +49-4191-508-0 · 📠 +49-4191-508-209

contact@wiska.de · www.wiska.com



Your Contact:  
**WISKA Hoppmann GmbH**  
Kisdorfer Weg 28 · 24568 Kaltenkirchen · Germany  
☎ +49-4191-508-0 · 📠 +49-4191-508-209  
contact@wiska.de · www.wiska.com