

KVM 45-W28/Cr

Cable gland, brass chromed-plated, DIN 89280, M45



Products may differ in size, colour and appearance to those shown. If you require further information or customisation, please contact us directly.



Material cable gland	Brass chromium-plated
Material sealing gasket	EPDM
Temp. range min	-40 °C
Temp. range max	100 °C
Protection class	IP54
Thread type	M
Ø Connection thread D	45
Lead	2
Length screw-in thread L	14 mm
Ø cable diameter min	26 mm
Ø cable diameter max	28,5 mm
Key width SW	46 mm
Collar diameter (E)	53 mm
Total length TL	62 mm
Install. torques fitting	20 N m
Install. torques cap nut	15 N m
Surface	Chromium-plated
Order no. chrome-plated	10014587
Type	KVM 45-W28/Cr
Packing unit	1
Tariff number	85369010
EAN number	4007685145879
ETIM-Classification	EC000441

Your Contact:

WISKA Hoppmann GmbH

Kisdorfer Weg 28 · 24568 Kaltenkirchen · Germany

☎ +49-4191-508-0 · 📠 +49-4191-508-209

contact@wiska.de · www.wiska.com

Recommended accessories

GM 45/Cr

10011529

23.05.2026

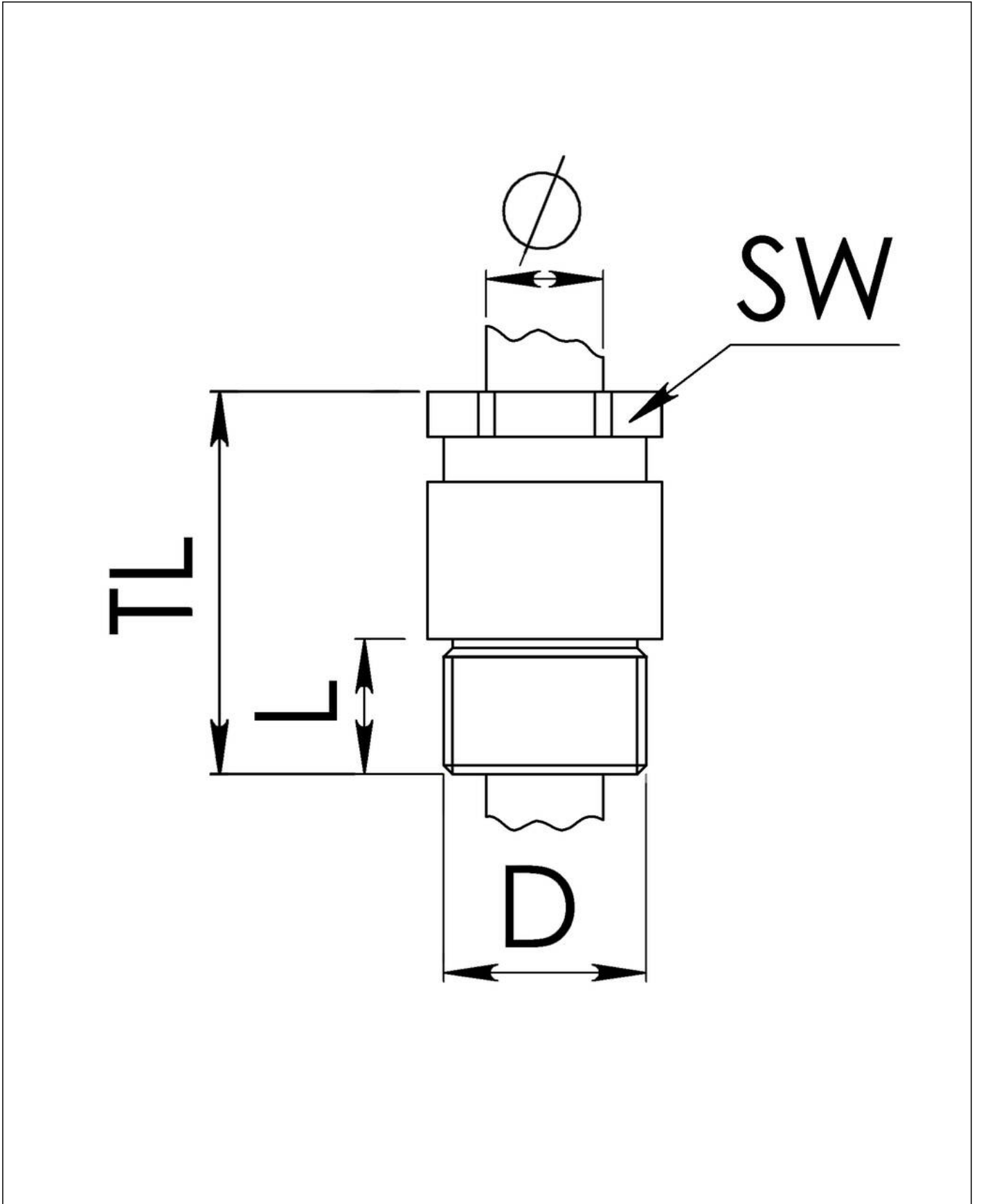
Your Contact:

WISKA Hoppmann GmbH

Kisdorfer Weg 28 · 24568 Kaltenkirchen · Germany

 +49-4191-508-0 ·  +49-4191-508-209

contact@wiska.de · www.wiska.com



Your Contact:
WISKA Hoppmann GmbH
Kisdorfer Weg 28 · 24568 Kaltenkirchen · Germany
☎ +49-4191-508-0 · 📠 +49-4191-508-209
contact@wiska.de · www.wiska.com