

## KVM 56-W38/Cr

Cable gland, brass chromed-plated, DIN 89280, M56



Products may differ in size, colour and appearance to those shown. If you require further information or customisation, please contact us directly.



<b>Material cable gland</b>	Brass chromium-plated
<b>Material sealing gasket</b>	EPDM
<b>Temp. range min</b>	-40 °C
<b>Temp. range max</b>	100 °C
<b>Protection class</b>	IP54
<b>Thread type</b>	M
<b>Ø Connection thread D</b>	56
<b>Lead</b>	2
<b>Length screw-in thread L</b>	15 mm
<b>Ø cable diameter min</b>	35 mm
<b>Ø cable diameter max</b>	38,5 mm
<b>Key width SW</b>	55 mm
<b>Collar diameter (E)</b>	63 mm
<b>Total length TL</b>	68 mm
<b>Install. torques fitting</b>	20 N m
<b>Install. torques cap nut</b>	15 N m
<b>Surface</b>	Chromium-plated
<b>Order no. chrome-plated</b>	10014595
<b>Type</b>	KVM 56-W38/Cr
<b>Packing unit</b>	1
<b>Tariff number</b>	85369010
<b>EAN number</b>	4007685145954
<b>ETIM-Classification</b>	EC000441

Your Contact:

WISKA Hoppmann GmbH

Kisdorfer Weg 28 · 24568 Kaltenkirchen · Germany

☎ +49-4191-508-0 · 📠 +49-4191-508-209

contact@wiska.de · www.wiska.com

**Recommended accessories**

**GM 56/Cr**

10011528

23.05.2026

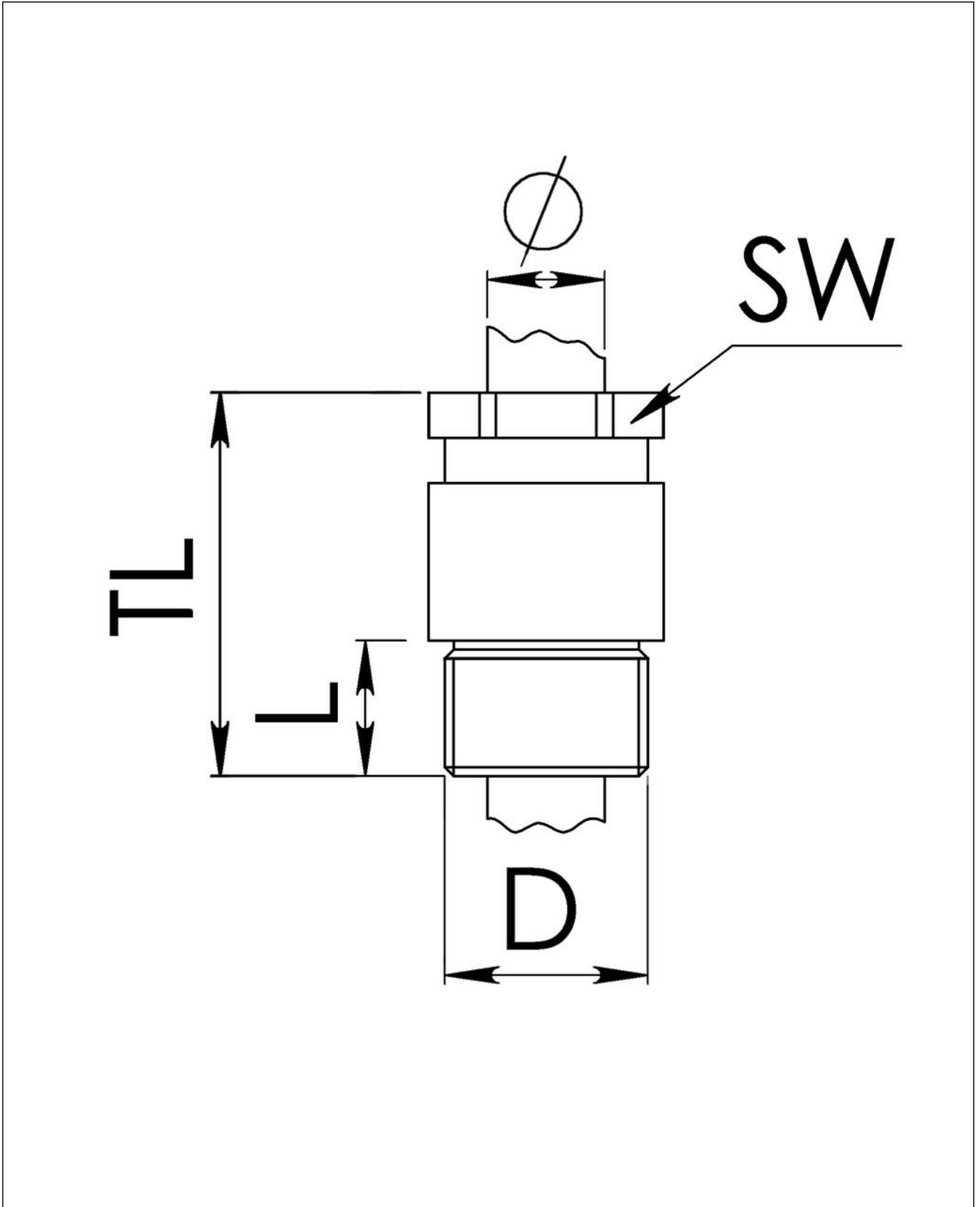
Your Contact:

**WISKA Hoppmann GmbH**

Kisdorfer Weg 28 · 24568 Kaltenkirchen · Germany

☎ +49-4191-508-0 · 📠 +49-4191-508-209

contact@wiska.de · www.wiska.com



Your Contact:  
**WISKA Hoppmann GmbH**  
Kisdorfer Weg 28 · 24568 Kaltenkirchen · Germany  
☎ +49-4191-508-0 · 📠 +49-4191-508-209  
contact@wiska.de · www.wiska.com