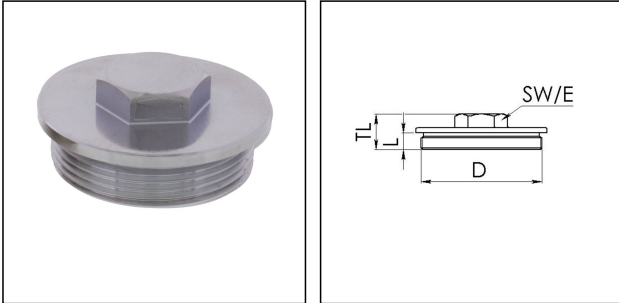


VSM 63/Cr

Stop end, brass chromed-plated similar to DIN 89284, M63



Products may differ in size, colour and appearance to those shown. If you require further information or customisation, please contact us directly.



| | |
|---------------------------------|------------------------|
| Material | Brass |
| Temp. range min | -150 °C |
| Temp. range max | 250 °C |
| Protection class | IP54 |
| Thread type | M |
| Ø Connection thread D | 63 |
| Lead | 1,5 |
| Length screw-in thread L | 12 mm |
| Key width SW | 27 mm |
| Collar diameter (E) | 32 mm |
| Total length TL | 22 mm |
| Advice | * Similar to DIN 89284 |
| Surface | Chromium-plated |
| Order no. chrome-plated | 10016694 |
| Form | B |
| Type | VSM 63/Cr |
| Packing unit | 1 |
| ETIM-Classification | EC000032 |

Remarks:

- with O-ring IP66/68

Recommended accessories

| | |
|-----------------|----------|
| ORD-E 63 | 10064704 |
|-----------------|----------|

Your Contact:

WISKA Hoppmann GmbH

Kisdorfer Weg 28 · 24568 Kaltenkirchen · Germany

☎ +49-4191-508-0 · 📠 +49-4191-508-209

contact@wiska.de · www.wiska.com

08.07.2026

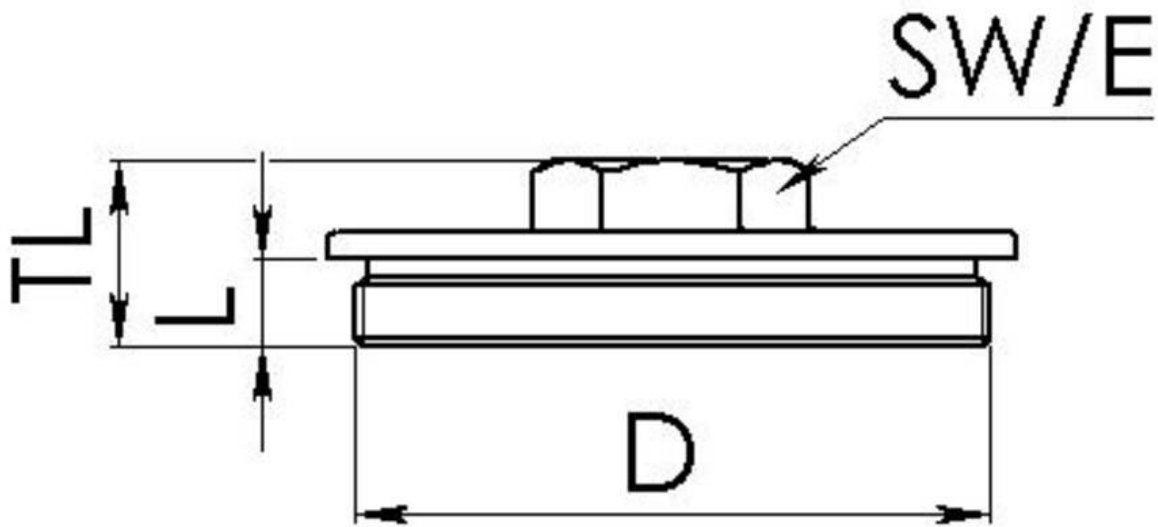
Your Contact:

WISKA Hoppmann GmbH

Kisdorfer Weg 28 · 24568 Kaltenkirchen · Germany

☎ +49-4191-508-0 · 📠 +49-4191-508-209

contact@wiska.de · www.wiska.com



Your Contact:

WISKA Hoppmann GmbH

Kisdorfer Weg 28 · 24568 Kaltenkirchen · Germany

☎ +49-4191-508-0 · 📠 +49-4191-508-209

contact@wiska.de · www.wiska.com