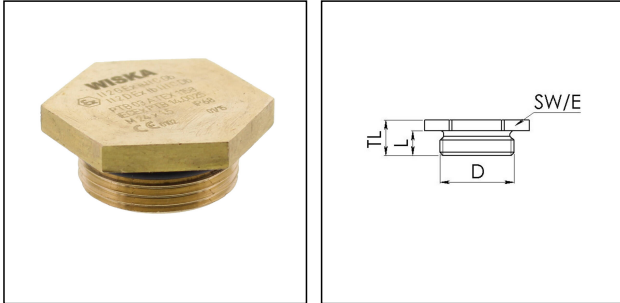
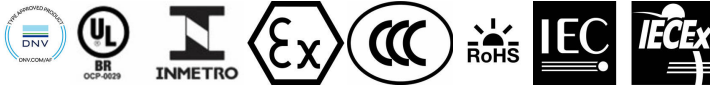


## EX-VSM 25

Ex-stop end DIN 89284, brass, with mounted o-ring, M25



Products may differ in size, colour and appearance to those shown. If you require further information or customisation, please contact us directly.



<b>Material</b>	Brass
<b>Material sealing gasket</b>	EPDM
<b>Temp. range min</b>	-40 °C
<b>Temp. range max</b>	120 °C
<b>Protection class</b>	IP66 / IP68 (5 bar 30 min)
<b>Type of protection</b>	Ex e, Ex tb
<b>Ex-Certificate</b>	IECEx, ATEX
<b>Ø Connection thread D</b>	25
<b>Thread type</b>	M
<b>Lead</b>	1,5
<b>Length screw-in thread L</b>	9 mm
<b>Key width SW</b>	30 mm
<b>Collar diameter (E)</b>	35 mm
<b>Total length TL</b>	13 mm
<b>Surface</b>	Bright
<b>Order no. bright</b>	10030203
<b>Type</b>	EX-VSM 25
<b>Packing unit</b>	1
<b>EAN number</b>	4007686177299
<b>Tariff number</b>	74198090
<b>ETIM-Classification</b>	EC000032

23.05.2026

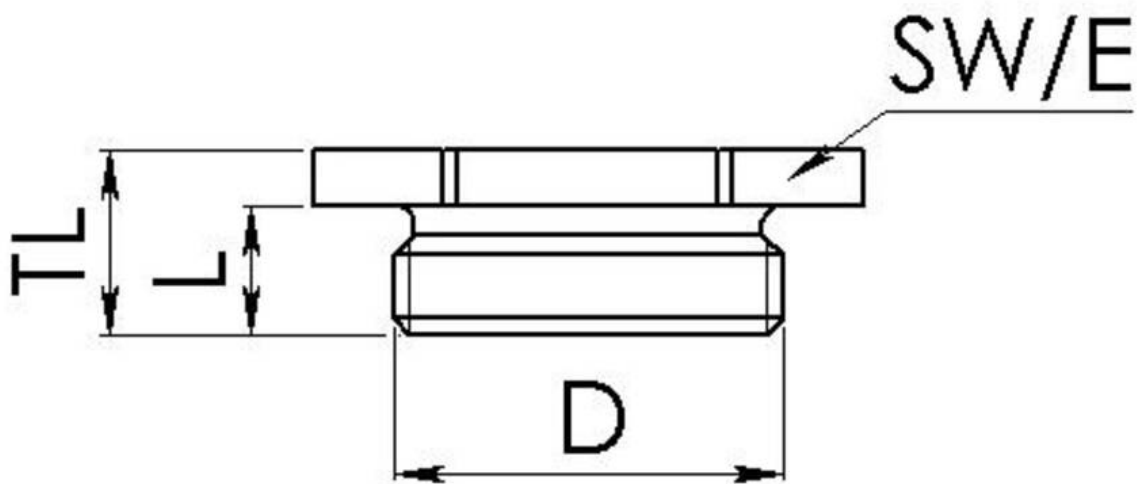
Your Contact:

**WISKA Hoppmann GmbH**

Kisdorfer Weg 28 · 24568 Kaltenkirchen · Germany

☎ +49-4191-508-0 · 📠 +49-4191-508-209

contact@wiska.de · www.wiska.com



Your Contact:

**WISKA Hoppmann GmbH**

Kisdorfer Weg 28 · 24568 Kaltenkirchen · Germany

☎ +49-4191-508-0 · 📠 +49-4191-508-209

contact@wiska.de · www.wiska.com