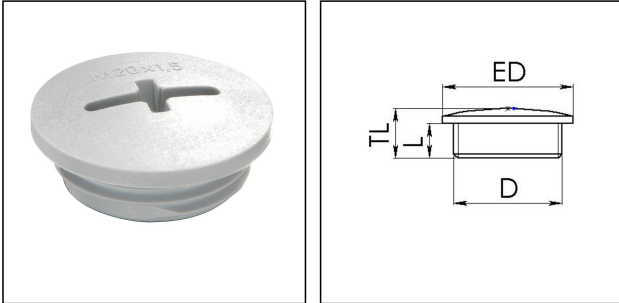


## EVSG 32 LG

Stop end, polyamide, RAL 7035, M32



Products may differ in size, colour and appearance to those shown. If you require further information or customisation, please contact us directly.



<b>Material</b>	Polyamide, fibre reinforced
<b>Temp. range min</b>	-40 °C
<b>Temp. range max</b>	100 °C
<b>Glow wire test</b>	650 °C
<b>Protection class</b>	IP56
<b>Advice</b>	with sealing IP66/IP68
<b>Thread type</b>	M
<b>Ø Connection thread D</b>	32
<b>Lead</b>	1,5
<b>Length screw-in thread L</b>	8 mm
<b>Total length TL</b>	12 mm
<b>External diameter ED</b>	37 mm
<b>Product Color</b>	RAL 7035
<b>Order no. RAL 7035</b>	10060628
<b>Type</b>	EVSG 32 LG
<b>Packing unit</b>	100
<b>EAN number</b>	4007685606288
<b>Tariff number</b>	39269097
<b>ETIM-Classification</b>	EC000032

### Recommended accessories

<b>EMUG 32 LG</b>	10060774
<b>EADR 32</b>	10062805

Your Contact:

WISKA Hoppmann GmbH

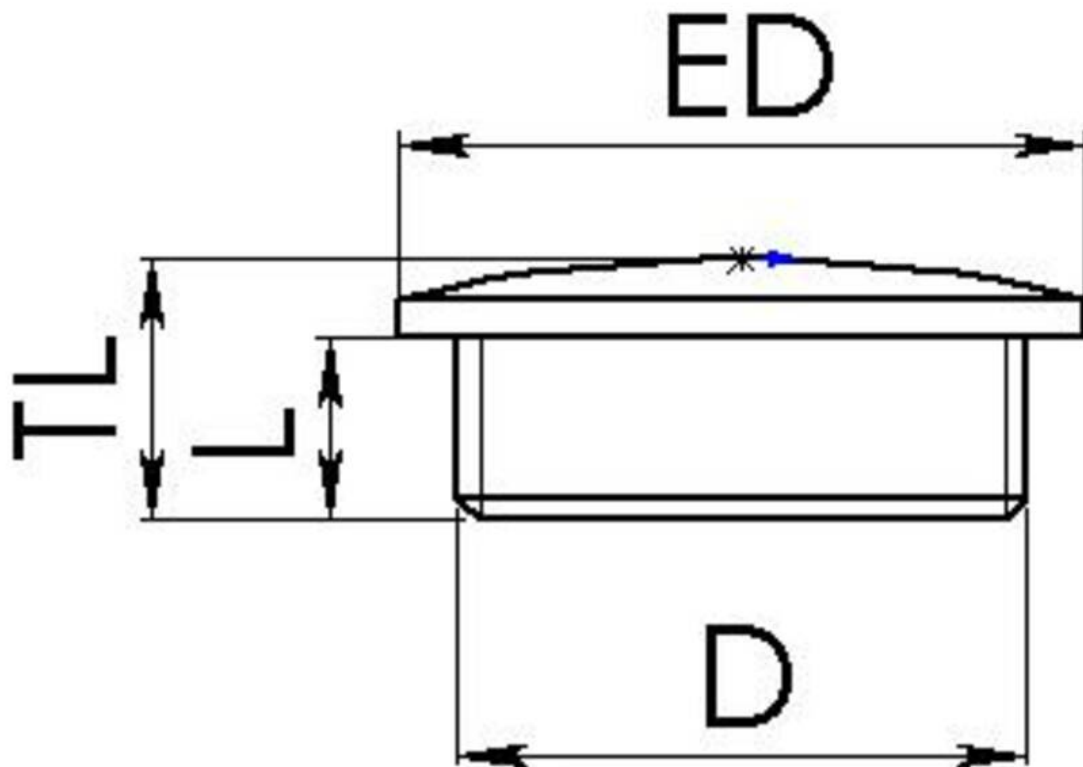
Kisdorfer Weg 28 · 24568 Kaltenkirchen · Germany

☎ +49-4191-508-0 · 📠 +49-4191-508-209

contact@wiska.de · www.wiska.com

08.07.2026

Your Contact:  
**WISKA Hoppmann GmbH**  
Kisdorfer Weg 28 · 24568 Kaltenkirchen · Germany  
☎ +49-4191-508-0 · 📠 +49-4191-508-209  
contact@wiska.de · www.wiska.com



Your Contact:

**WISKA Hoppmann GmbH**

Kisdorfer Weg 28 · 24568 Kaltenkirchen · Germany

☎ +49-4191-508-0 · 📠 +49-4191-508-209

contact@wiska.de · www.wiska.com