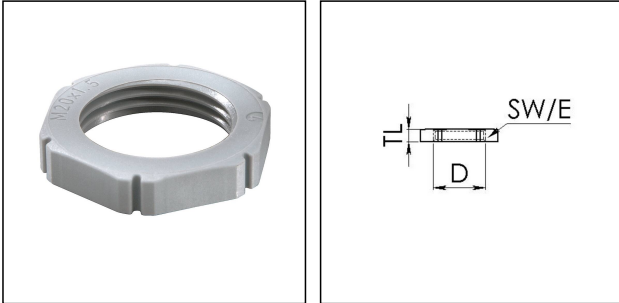


EMUG 40 SG

Locknut, polyamide, RAL 7001, M40



Products may differ in size, colour and appearance to those shown. If you require further information or customisation, please contact us directly.



| | |
|------------------------------|-----------------------------|
| Material | Polyamide, fibre reinforced |
| Temp. range min | -40 °C |
| Temp. range max | 100 °C |
| Glow wire test | 650 °C |
| Thread type | M |
| Ø Connection thread D | 40 |
| Lead | 1,5 |
| Total length TL | 7 mm |
| Key width SW | 50 mm |
| Collar diameter (E) | 55 mm |
| Product Color | RAL 7001 |
| Order no. RAL 7001 | 10062717 |
| Type | EMUG 40 SG |
| Packing unit | 50 |
| EAN number | 4007685627177 |
| Tariff number | 39269097 |
| ETIM-Classification | EC000940 |

23.05.2026

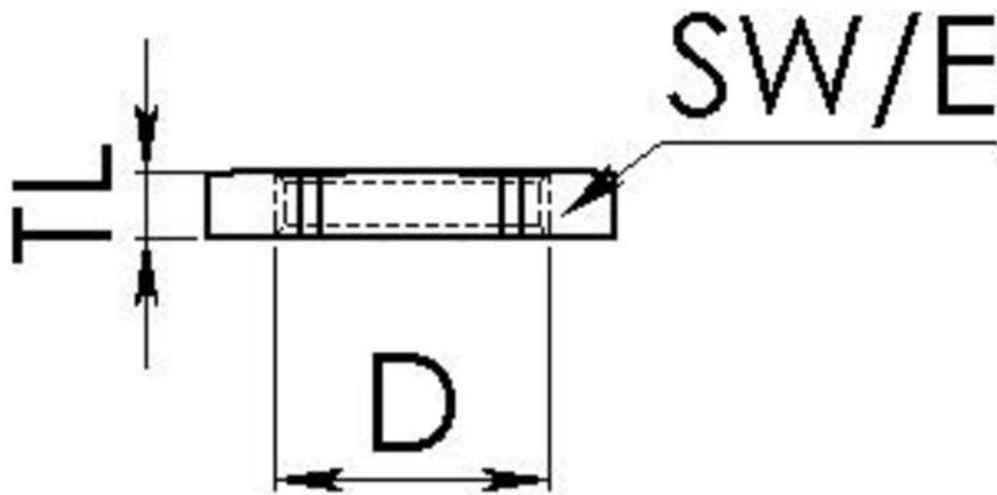
Your Contact:

WISKA Hoppmann GmbH

Kisdorfer Weg 28 · 24568 Kaltenkirchen · Germany

☎ +49-4191-508-0 · 📠 +49-4191-508-209

contact@wiska.de · www.wiska.com



Your Contact:

WISKA Hoppmann GmbH

Kisdorfer Weg 28 · 24568 Kaltenkirchen · Germany

☎ +49-4191-508-0 · 📠 +49-4191-508-209

contact@wiska.de · www.wiska.com