

EMMU-EMV 63

EMC-locknut, brass nickel-plated, M63



Products may differ in size, colour and appearance to those shown. If you require further information or customisation, please contact us directly.



| | |
|--------------------------------|---------------------|
| Material | Brass nickel-plated |
| Thread type | M |
| Ø Connection thread D | 63 |
| Lead | 1,5 |
| Key width SW | 70 mm |
| Total length TL | 7 mm |
| Surface | Nickel-plated |
| Order no. nickel-plated | 10063217 |
| Type | EMMU-EMV 63 |
| Packing unit | 25 |
| Tariff number | 74153300 |
| ETIM-Classification | EC000940 |

23.05.2026

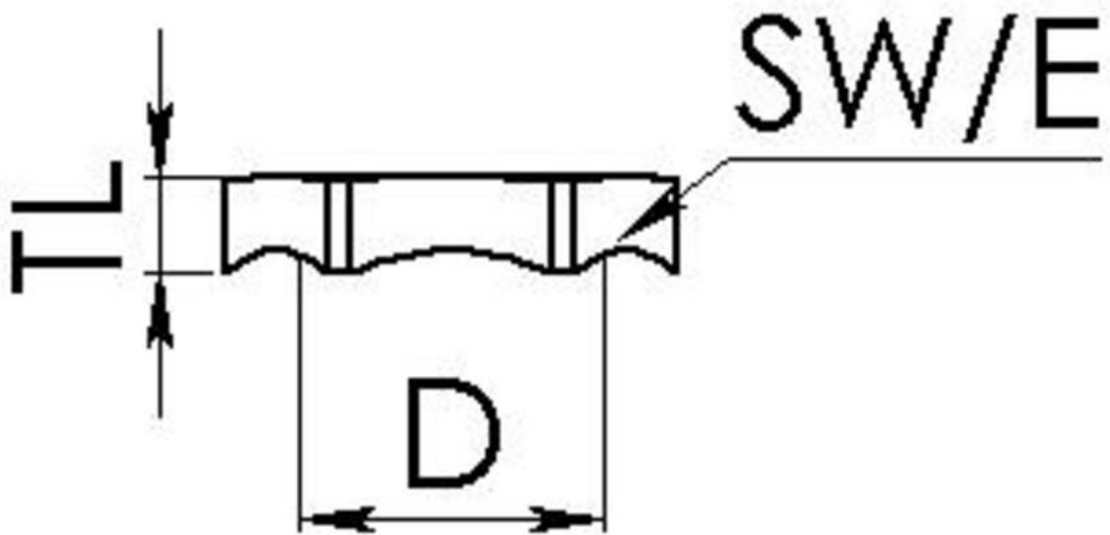
Your Contact:

WISKA Hoppmann GmbH

Kisdorfer Weg 28 · 24568 Kaltenkirchen · Germany

☎ +49-4191-508-0 · 📠 +49-4191-508-209

contact@wiska.de · www.wiska.com



Your Contact:

WISKA Hoppmann GmbH

Kisdorfer Weg 28 · 24568 Kaltenkirchen · Germany

☎ +49-4191-508-0 · 📠 +49-4191-508-209

contact@wiska.de · www.wiska.com