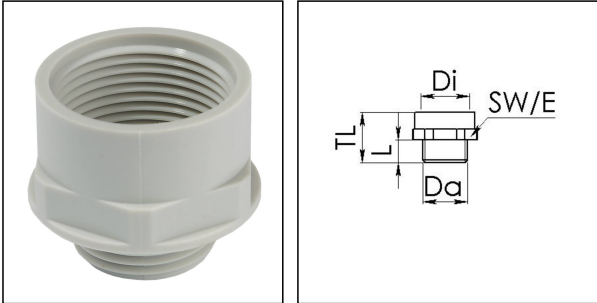


## AMP 20/16 LG

Adaptor polyamide, RAL 7035, M20 / Pg16



Products may differ in size, colour and appearance to those shown. If you require further information or customisation, please contact us directly.



<b>Material</b>	Polyamide, fibre reinforced
<b>Temp. range min</b>	-40 °C
<b>Temp. range max</b>	100 °C
<b>Glow wire test</b>	650 °C
<b>Thread type outer</b>	M
<b>Ø outer thread</b>	20
<b>Lead outer</b>	1,5
<b>Length screw-in thread L</b>	9 mm
<b>Thread type inner</b>	PG
<b>Ø inner thread</b>	16
<b>Length internal thread</b>	15,5 mm
<b>Total length TL</b>	27 mm
<b>Key width SW</b>	27 mm
<b>Collar diameter (E)</b>	30 mm
<b>Form</b>	A
<b>Product Color</b>	RAL 7035
<b>Order no. RAL 7035</b>	10063635
<b>Type</b>	AMP 20/16 LG
<b>Packing unit</b>	25
<b>EAN number</b>	4007685636353
<b>Tariff number</b>	39269097
<b>ETIM-Classification</b>	EC000938

Your Contact:

WISKA Hoppmann GmbH

Kisdorfer Weg 28 · 24568 Kaltenkirchen · Germany

☎ +49-4191-508-0 · 📠 +49-4191-508-209

contact@wiska.de · www.wiska.com

**Recommended accessories**

<b>EMUG 20 LG</b>	10060772
<b>EADR 20</b>	10062803

23.05.2026

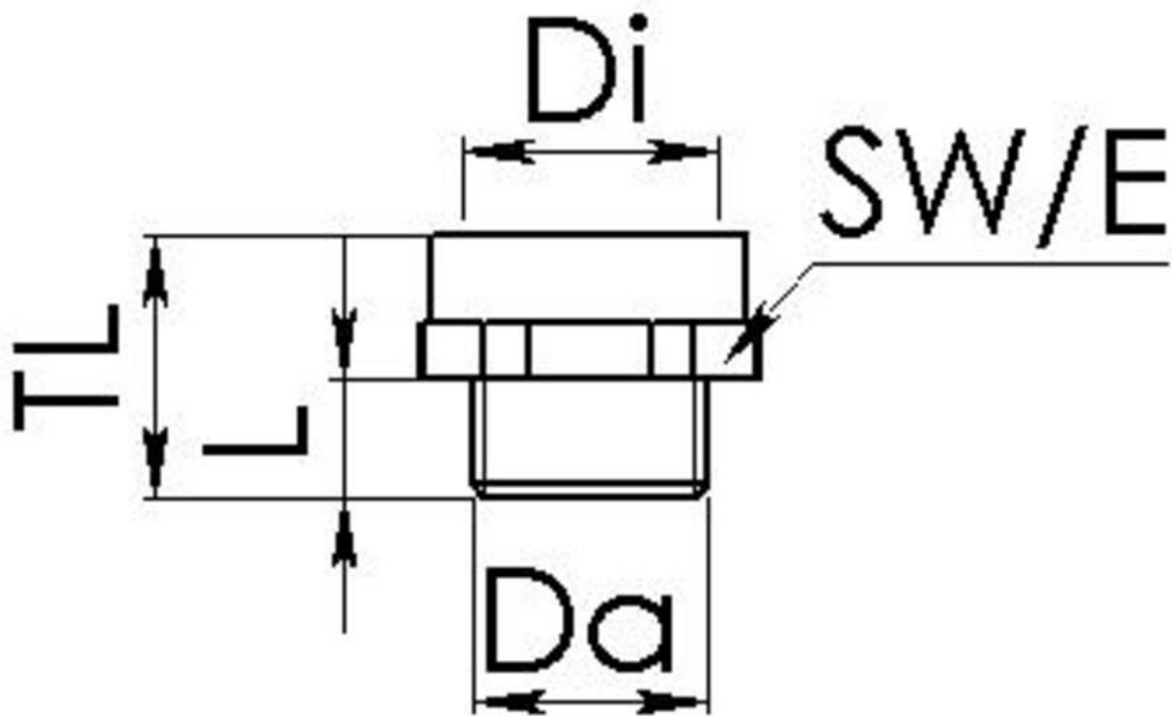
Your Contact:

**WISKA Hoppmann GmbH**

Kisdorfer Weg 28 · 24568 Kaltenkirchen · Germany

 +49-4191-508-0 ·  +49-4191-508-209

[contact@wiska.de](mailto:contact@wiska.de) · [www.wiska.com](http://www.wiska.com)



Your Contact:

**WISKA Hoppmann GmbH**

Kisdorfer Weg 28 · 24568 Kaltenkirchen · Germany

☎ +49-4191-508-0 · 📠 +49-4191-508-209

contact@wiska.de · www.wiska.com