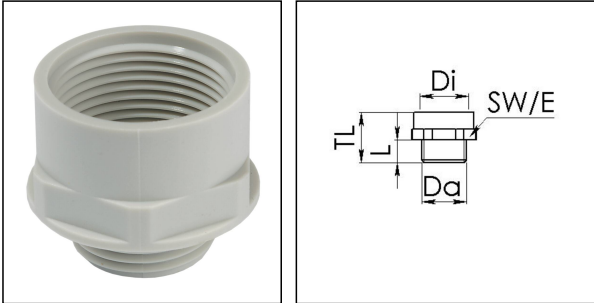


APM 29/40 LG

Adaptor polyamide, RAL 7035, Pg29 / M40



Products may differ in size, colour and appearance to those shown. If you require further information or customisation, please contact us directly.



Material	Polyamide, fibre reinforced
Temp. range min	-40 °C
Temp. range max	100 °C
Glow wire test	650 °C
Thread type outer	PG
Ø outer thread	29
Length screw-in thread L	12 mm
Thread type inner	M
Ø inner thread	40
Lead inner	1,5
Length internal thread	15,5 mm
Total length TL	30 mm
Key width SW	46 mm
Collar diameter (E)	51 mm
Form	A
Product Color	RAL 7035
Order no. RAL 7035	10063668
Type	APM 29/40 LG
Packing unit	10
EAN number	4007685636681
Tariff number	39269097
ETIM-Classification	EC000938

Your Contact:

WISKA Hoppmann GmbH

Kisdorfer Weg 28 · 24568 Kaltenkirchen · Germany

☎ +49-4191-508-0 · 📠 +49-4191-508-209

contact@wiska.de · www.wiska.com

Recommended accessories

MUG 29 LG	10060676
ADR 29	10061425

08.07.2026

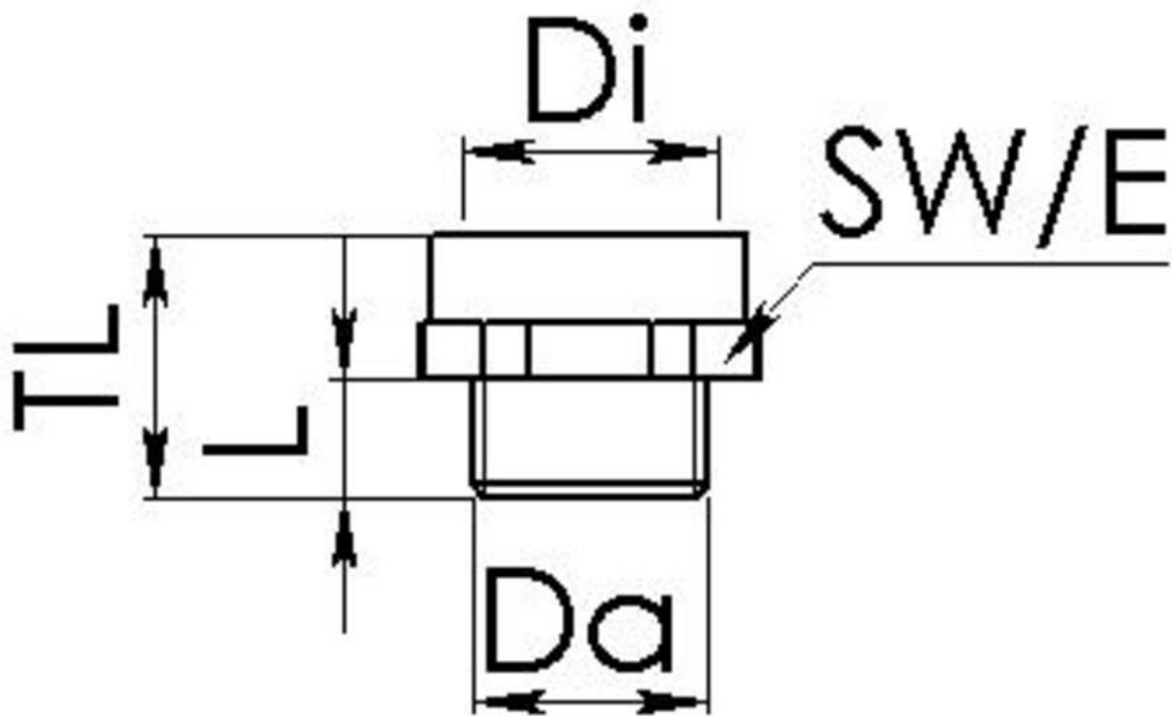
Your Contact:

WISKA Hoppmann GmbH

Kisdorfer Weg 28 · 24568 Kaltenkirchen · Germany

☎ +49-4191-508-0 · 📠 +49-4191-508-209

contact@wiska.de · www.wiska.com



Your Contact:

WISKA Hoppmann GmbH

Kisdorfer Weg 28 · 24568 Kaltenkirchen · Germany

☎ +49-4191-508-0 · 📠 +49-4191-508-209

contact@wiska.de · www.wiska.com