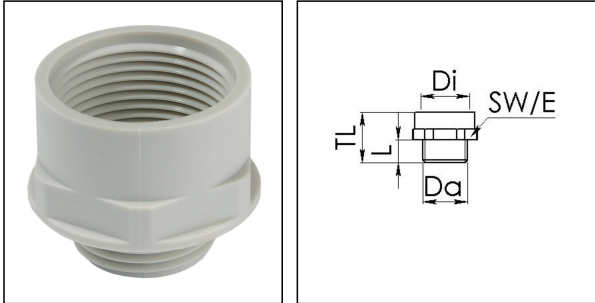


APM 42/50 LG

Adaptor polyamide, RAL 7035, Pg42 / M50



Products may differ in size, colour and appearance to those shown. If you require further information or customisation, please contact us directly.



Material	Polyamide, fibre reinforced
Temp. range min	-40 °C
Temp. range max	100 °C
Glow wire test	650 °C
Thread type outer	PG
Ø outer thread	42
Length screw-in thread L	14 mm
Thread type inner	M
Ø inner thread	50
Lead inner	1,5
Length internal thread	15,5 mm
Total length TL	32 mm
Key width SW	60 mm
Collar diameter (E)	66 mm
Form	A
Product Color	RAL 7035
Order no. RAL 7035	10063674
Type	APM 42/50 LG
Packing unit	5
EAN number	4007685636742
Tariff number	39269097
ETIM-Classification	EC000938

Your Contact:

WISKA Hoppmann GmbH

Kisdorfer Weg 28 · 24568 Kaltenkirchen · Germany

☎ +49-4191-508-0 · 📠 +49-4191-508-209

contact@wiska.de · www.wiska.com

Recommended accessories

MUG 42 LG	10060678
ADR 42	10061427

08.07.2026

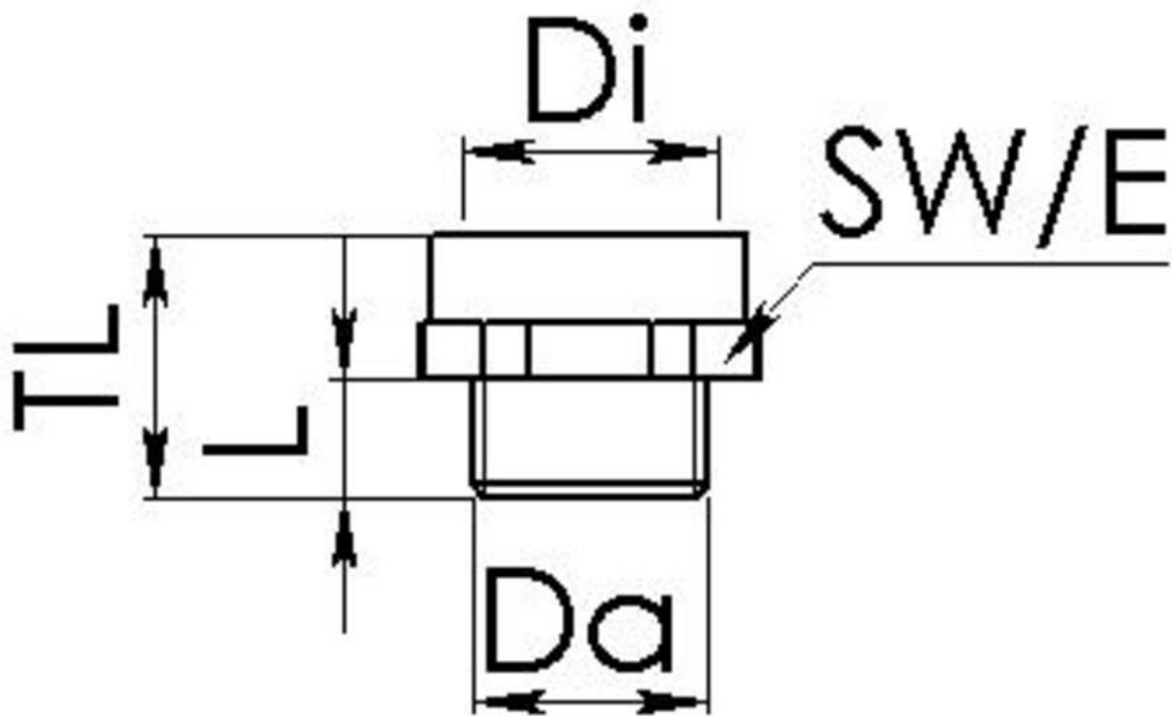
Your Contact:

WISKA Hoppmann GmbH

Kisdorfer Weg 28 · 24568 Kaltenkirchen · Germany

☎ +49-4191-508-0 · 📠 +49-4191-508-209

contact@wiska.de · www.wiska.com



Your Contact:

WISKA Hoppmann GmbH

Kisdorfer Weg 28 · 24568 Kaltenkirchen · Germany

☎ +49-4191-508-0 · 📠 +49-4191-508-209

contact@wiska.de · www.wiska.com