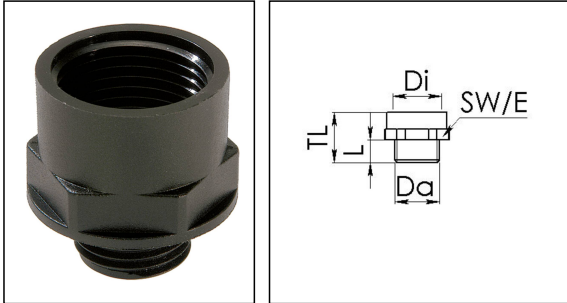


EX-KRM 20/16

Ex-reduction adaptor, polyamide, M20-M16



Products may differ in size, colour and appearance to those shown. If you require further information or customisation, please contact us directly.



Material	Polyamide, fibre reinforced
Material sealing gasket	EPDM
Temp. range min	-40 °C
Temp. range max	75 °C
Protection class	IP66 / IP68 (5 bar 30 min)
Type of protection	Ex eb, Ex tb
Ex-Certificate	IECEx, ATEX
Thread type outer	M
Ø outer thread	20
Lead outer	1,5
Length screw-in thread L	9 mm
Thread type inner	M
Ø inner thread	16
Lead inner	1,5
Length internal thread	15,5 mm
Key width SW	24 mm
Collar diameter (E)	28 mm
Total length TL	27 mm
Form	A
Product Color	RAL 9005
Equipment	Incl. connection thread gasket
Order no. RAL 9005	10064722
Type	EX-KRM 20/16
Packing unit	100
EAN number	4007685647229

Your Contact:

WISKA Hoppmann GmbH

Kisdorfer Weg 28 · 24568 Kaltenkirchen · Germany

☎ +49-4191-508-0 · 📠 +49-4191-508-209

contact@wiska.de · www.wiska.com

Tariff number	39269097
ETIM-Classification	EC000938

Recommended accessories

EMUG 20 BK	10061782
-------------------	----------

12.05.2026

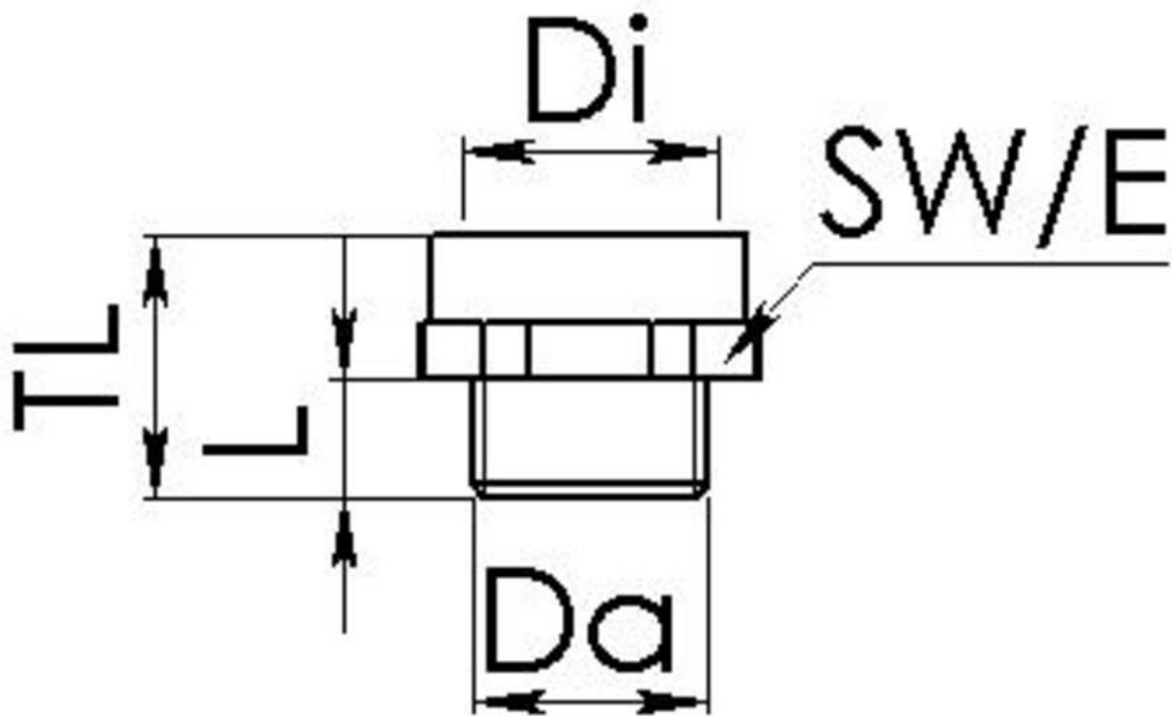
Your Contact:

WISKA Hoppmann GmbH

Kisdorfer Weg 28 · 24568 Kaltenkirchen · Germany

☎ +49-4191-508-0 · 📠 +49-4191-508-209

contact@wiska.de · www.wiska.com



Your Contact:

WISKA Hoppmann GmbH

Kisdorfer Weg 28 · 24568 Kaltenkirchen · Germany

☎ +49-4191-508-0 · 📠 +49-4191-508-209

contact@wiska.de · www.wiska.com