

EX-APM 13,5/25

Ex-adaptor, polyamide, Pg13,5-M25



Products may differ in size, colour and appearance to those shown. If you require further information or customisation, please contact us directly.



Material	Polyamide, fibre reinforced
Material sealing gasket	EPDM
Temp. range min	-40 °C
Temp. range max	75 °C
Protection class	IP66 / IP68 (5 bar 30 min)
Type of protection	Ex eb, Ex tb
Ex-Certificate	IECEX, ATEX
Thread type outer	PG
Ø outer thread	13,5
Length screw-in thread L	10 mm
Thread type inner	M
Ø inner thread	25
Lead inner	1,5
Length internal thread	15,5 mm
Key width SW	29 mm
Collar diameter (E)	32 mm
Total length TL	28 mm
Form	A
Product Color	RAL 9005
Equipment	Incl. connection thread gasket
Order no. RAL 9005	10064758
Type	EX-APM 13,5/25
Packing unit	25
EAN number	4007685647588
Tariff number	39269097

Your Contact:

WISKA Hoppmann GmbH

Kisdorfer Weg 28 · 24568 Kaltenkirchen · Germany

☎ +49-4191-508-0 · 📠 +49-4191-508-209

contact@wiska.de · www.wiska.com

ETIM-Classification

EC000938

Recommended accessories

MUG 13,5 BK

10060683

12.05.2026

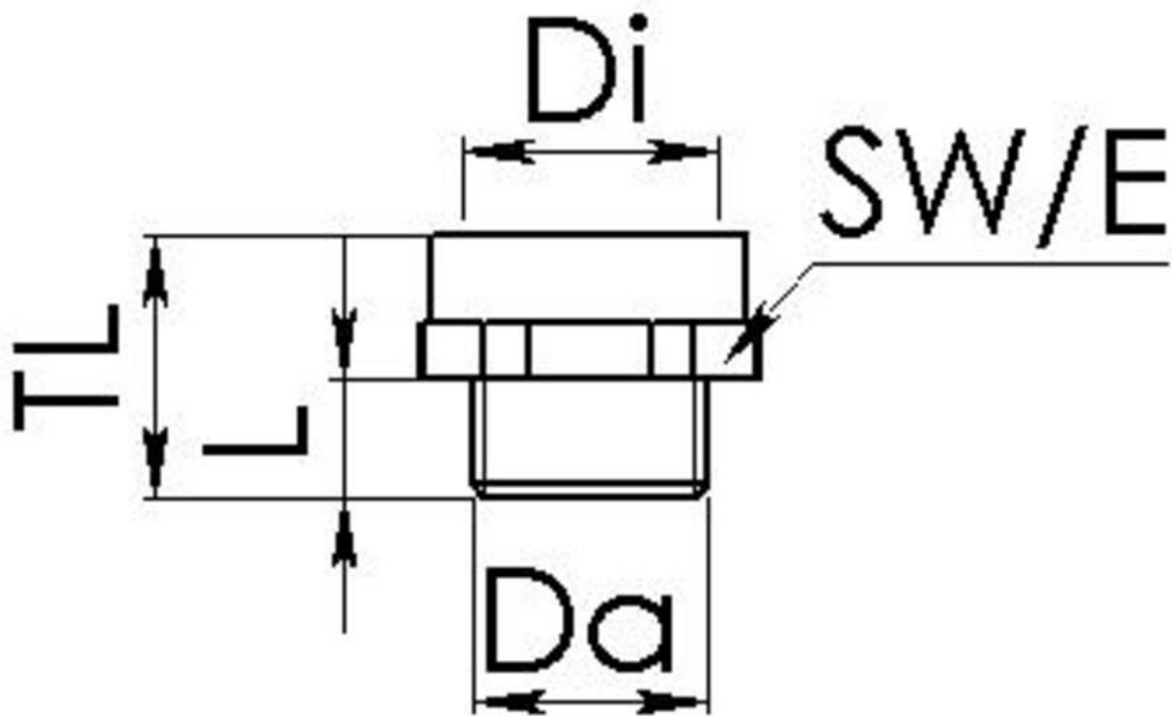
Your Contact:

WISKA Hoppmann GmbH

Kisdorfer Weg 28 · 24568 Kaltenkirchen · Germany

 +49-4191-508-0 ·  +49-4191-508-209

contact@wiska.de · www.wiska.com



Your Contact:

WISKA Hoppmann GmbH

Kisdorfer Weg 28 · 24568 Kaltenkirchen · Germany

☎ +49-4191-508-0 · 📠 +49-4191-508-209

contact@wiska.de · www.wiska.com