

EX-APM 29/40

Ex-adaptor, polyamide, Pg29-M40



Products may differ in size, colour and appearance to those shown. If you require further information or customisation, please contact us directly.



Material	Polyamide, fibre reinforced
Material sealing gasket	EPDM
Temp. range min	-40 °C
Temp. range max	75 °C
Protection class	IP66 / IP68 (5 bar 30 min)
Type of protection	Ex eb, Ex tb
Ex-Certificate	IECEX, ATEX
Thread type outer	PG
Ø outer thread	29
Length screw-in thread L	12 mm
Thread type inner	M
Ø inner thread	40
Lead inner	1,5
Length internal thread	15,5 mm
Key width SW	46 mm
Collar diameter (E)	51 mm
Total length TL	30 mm
Form	A
Product Color	RAL 9005
Equipment	Incl. connection thread gasket
Order no. RAL 9005	10064769
Type	EX-APM 29/40
Packing unit	10
EAN number	4007685647694
Tariff number	39269097

Your Contact:

WISKA Hoppmann GmbH

Kisdorfer Weg 28 · 24568 Kaltenkirchen · Germany

☎ +49-4191-508-0 · 📠 +49-4191-508-209

contact@wiska.de · www.wiska.com

ETIM-Classification

EC000938

Recommended accessories

MUG 29 BK

10060686

12.05.2026

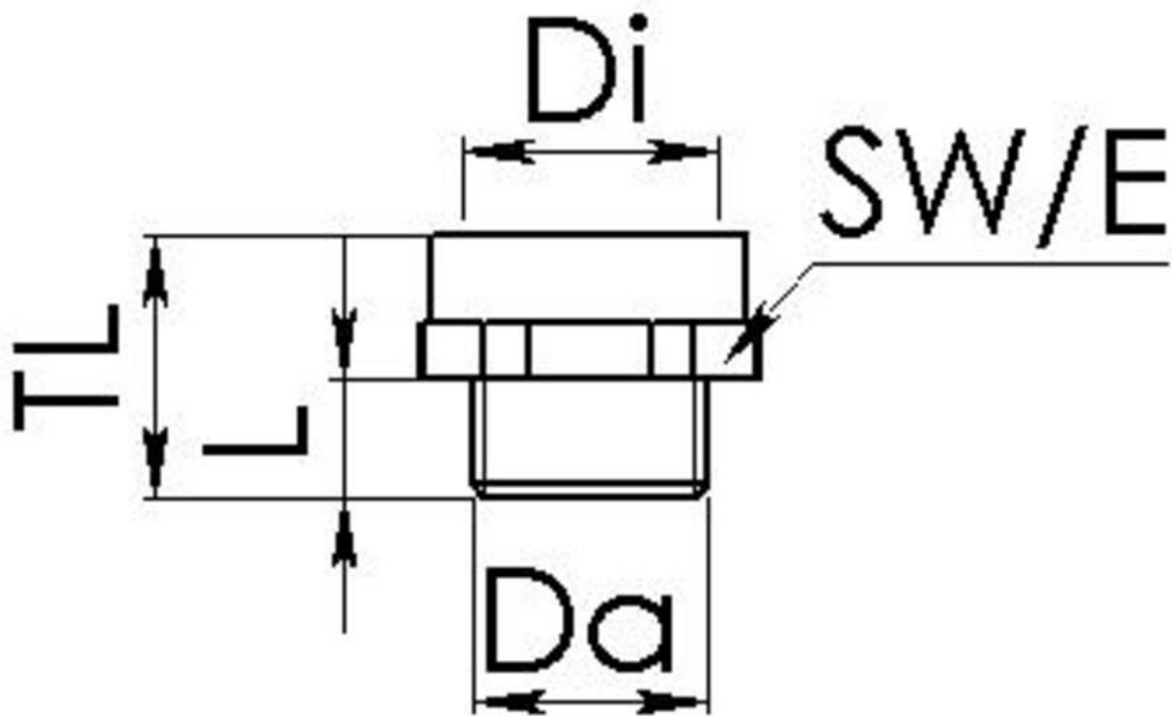
Your Contact:

WISKA Hoppmann GmbH

Kisdorfer Weg 28 · 24568 Kaltenkirchen · Germany

 +49-4191-508-0 ·  +49-4191-508-209

contact@wiska.de · www.wiska.com



Your Contact:

WISKA Hoppmann GmbH

Kisdorfer Weg 28 · 24568 Kaltenkirchen · Germany

☎ +49-4191-508-0 · 📠 +49-4191-508-209

contact@wiska.de · www.wiska.com