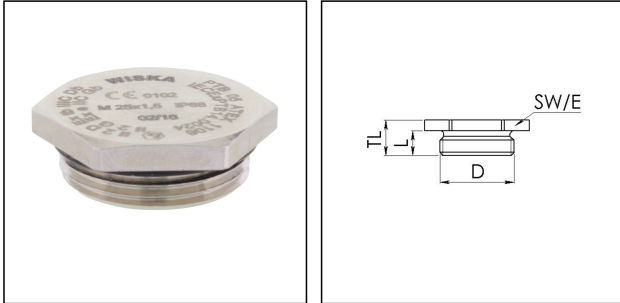


EX-EMVS 16

Ex stop end, brass nickel-plated, with O-ring EPDM, M16



Products may differ in size, colour and appearance to those shown. If you require further information or customisation, please contact us directly.



Material	Brass nickel-plated
Material sealing gasket	EPDM
Temp. range min	-40 °C
Temp. range max	120 °C
Protection class	IP66 / IP68 (5 bar 30 min)
Type of protection	Ex e, Ex tb
Ex-Certificate	IECEx, ATEX
Thread type	M
Ø Connection thread D	16
Lead	1,5
Length screw-in thread L	5 mm
Key width SW	18 mm
Collar diameter (E)	20 mm
Total length TL	8 mm
Surface	Nickel-plated
Order no. nickel-plated	10065332
Type	EX-EMVS 16
Packing unit	10
EAN number	4007685653329
Tariff number	74198090
ETIM-Classification	EC000032

Recommended accessories

Your Contact:

WISKA Hoppmann GmbH

Kisdorfer Weg 28 · 24568 Kaltenkirchen · Germany

☎ +49-4191-508-0 · 📠 +49-4191-508-209

contact@wiska.de · www.wiska.com

12.05.2026

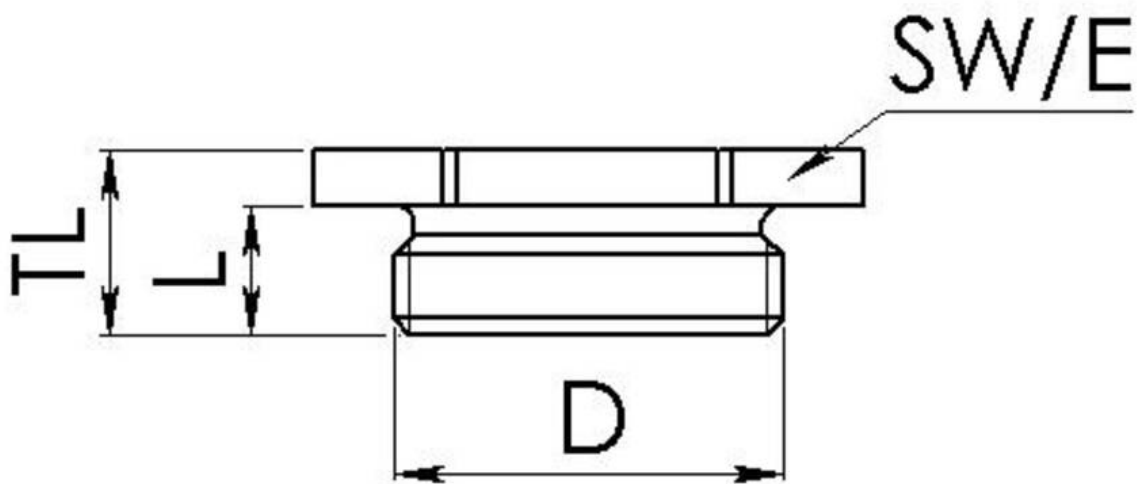
Your Contact:

WISKA Hoppmann GmbH

Kisdorfer Weg 28 · 24568 Kaltenkirchen · Germany

☎ +49-4191-508-0 · 📠 +49-4191-508-209

contact@wiska.de · www.wiska.com



Your Contact:

WISKA Hoppmann GmbH

Kisdorfer Weg 28 · 24568 Kaltenkirchen · Germany

☎ +49-4191-508-0 · 📠 +49-4191-508-209

contact@wiska.de · www.wiska.com