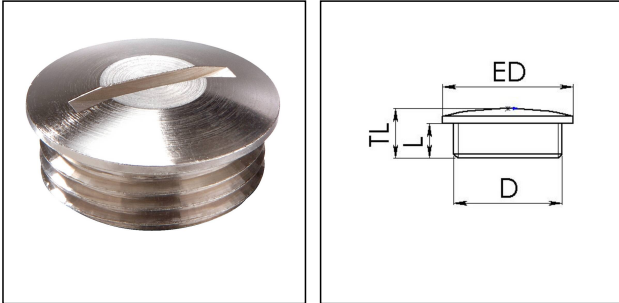


## ESVS 16

Stop end, stainless steel, M16



Products may differ in size, colour and appearance to those shown. If you require further information or customisation, please contact us directly.



<b>Material</b>	Stainless steel 1.4305
<b>Temp. range min</b>	-200 °C
<b>Temp. range max</b>	250 °C
<b>Protection class</b>	IP54
<b>Thread type</b>	M
<b>Ø Connection thread D</b>	16
<b>Lead</b>	1,5
<b>Length screw-in thread L</b>	5 mm
<b>External diameter ED</b>	18 mm
<b>Total length TL</b>	8 mm
<b>Advice</b>	with O-ring IP66/IP68
<b>WISKA-Order no.</b>	10065461
<b>Type</b>	ESVS 16
<b>Packing unit</b>	10
<b>EAN number</b>	4007685654616
<b>Tariff number</b>	73269098
<b>ETIM-Classification</b>	EC000032

### Recommended accessories

<b>ESMU 16</b>	10064189
<b>ORD-E 16</b>	10064698

23.05.2026

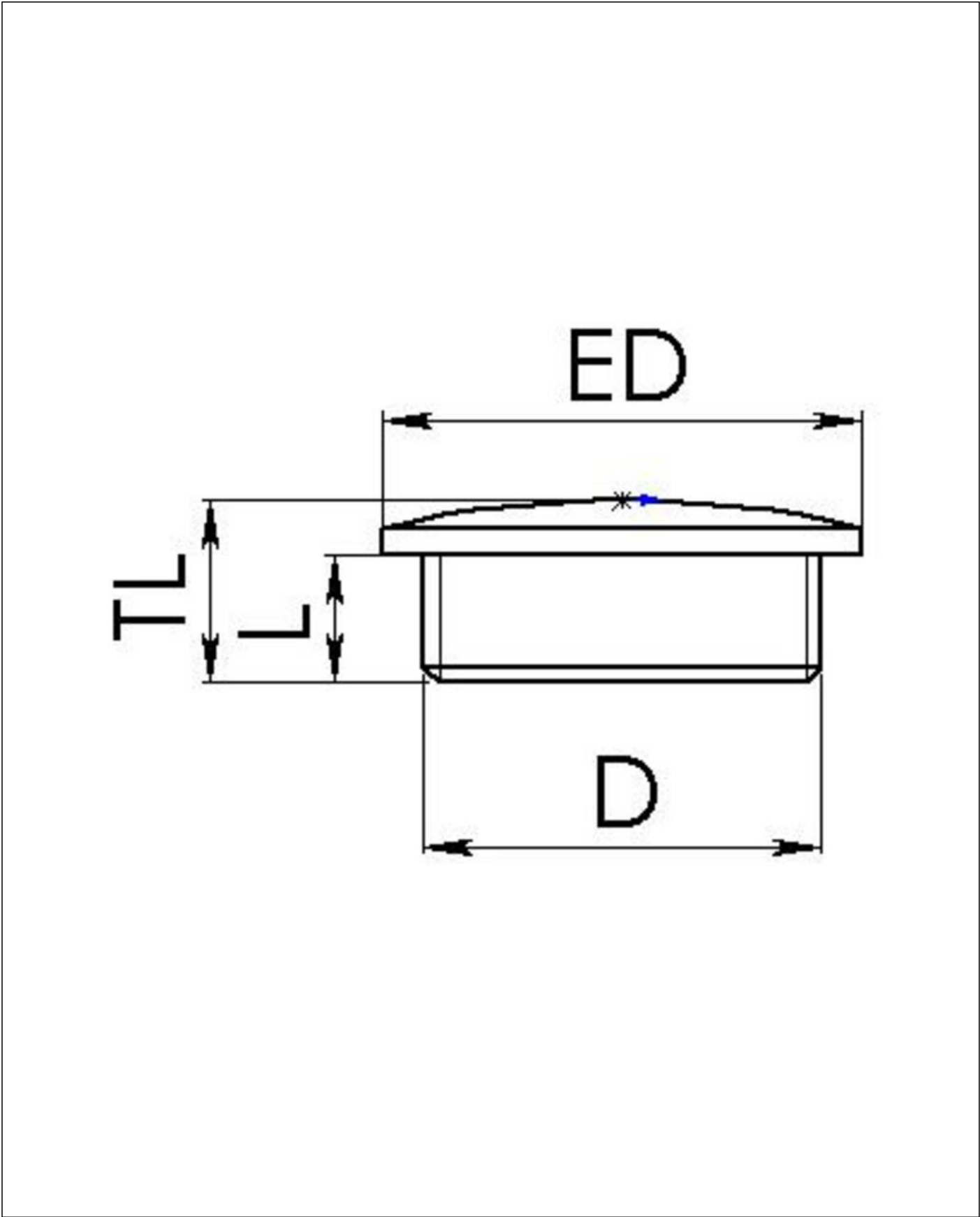
Your Contact:

**WISKA Hoppmann GmbH**

Kisdorfer Weg 28 · 24568 Kaltenkirchen · Germany

☎ +49-4191-508-0 · 📠 +49-4191-508-209

contact@wiska.de · www.wiska.com



Your Contact:  
**WISKA Hoppmann GmbH**  
Kisdorfer Weg 28 · 24568 Kaltenkirchen · Germany  
☎ +49-4191-508-0 · 📠 +49-4191-508-209  
contact@wiska.de · www.wiska.com