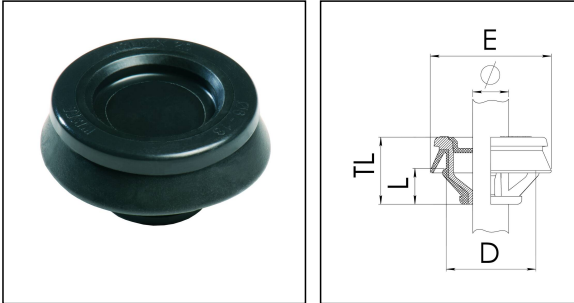


## CLIXX® 16 BK

Membrane cable entry with strain relief, plastic, RAL 9005, M16



Products may differ in size, colour and appearance to those shown. If you require further information or customisation, please contact us directly.



|                                 |                   |
|---------------------------------|-------------------|
| <b>Material</b>                 | Polypropylene     |
| <b>Material membrane</b>        | TPE               |
| <b>Temp. range min</b>          | -40 °C            |
| <b>Temp. range max</b>          | 65 °C             |
| <b>Glow wire test</b>           | 750 °C            |
| <b>Protection class</b>         | IP66 / IP67       |
| <b>Ø Connection thread D</b>    | 16                |
| <b>Length screw-in thread L</b> | 7,3 mm            |
| <b>Ø cable diameter min</b>     | 4,5 mm            |
| <b>Ø cable diameter max</b>     | 10 mm             |
| <b>Collar diameter (E)</b>      | 23 mm - 28 mm     |
| <b>Total length TL</b>          | 15 mm             |
| <b>Ø Drilling</b>               | 16,5 mm - 16,7 mm |
| <b>Wall thickness S</b>         | 0,8 mm - 3,5 mm   |
| <b>Product Color</b>            | RAL 9005          |
| <b>Order no. RAL 9005</b>       | 10101930          |
| <b>Type</b>                     | CLIXX® 16 BK      |
| <b>Packing unit</b>             | 50                |
| <b>EAN number</b>               | 4007685042208     |
| <b>Tariff number</b>            | 39269097          |
| <b>ETIM-Classification</b>      | EC000451          |

23.05.2026

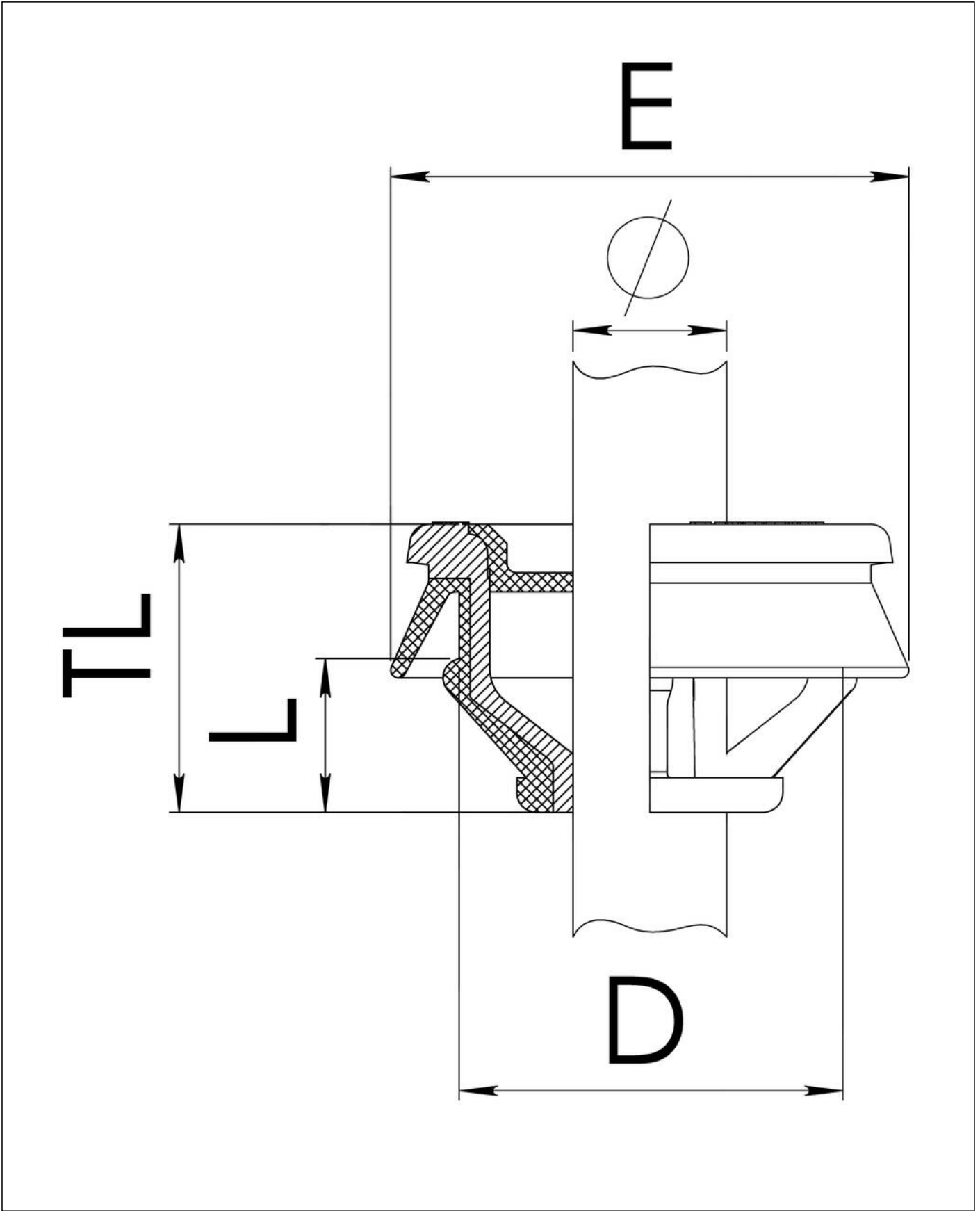
Your Contact:

**WISKA Hoppmann GmbH**

Kisdorfer Weg 28 · 24568 Kaltenkirchen · Germany

☎ +49-4191-508-0 · 📠 +49-4191-508-209

contact@wiska.de · www.wiska.com



Your Contact:  
**WISKA Hoppmann GmbH**  
Kisdorfer Weg 28 · 24568 Kaltenkirchen · Germany  
☎ +49-4191-508-0 · 📠 +49-4191-508-209  
contact@wiska.de · www.wiska.com