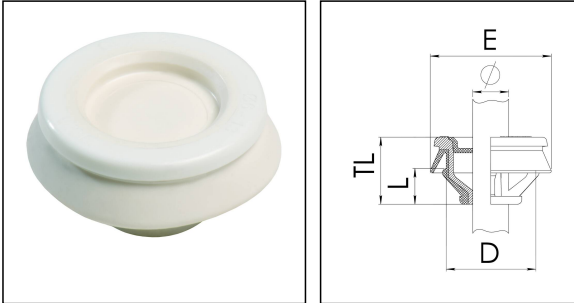


CLIXX® 25 WH

Membrane cable entry with strain relief, plastic, RAL 9001, M25



Products may differ in size, colour and appearance to those shown. If you require further information or customisation, please contact us directly.



Material	Polypropylene
Material membrane	TPE
Temp. range min	-40 °C
Temp. range max	65 °C
Glow wire test	750 °C
Protection class	IP66 / IP67
Ø Connection thread D	25
Length screw-in thread L	7,5 mm
Ø cable diameter min	9 mm
Ø cable diameter max	17 mm
Collar diameter (E)	32 mm - 38 mm
Total length TL	15 mm
Ø Drilling	25,5 mm - 25,7 mm
Wall thickness S	0,8 mm - 3,5 mm
Product Color	RAL 9001
Order no. RAL 9001	10101938
Type	CLIXX® 25 WH
Packing unit	50
EAN number	4007685042369
Tariff number	39269097
ETIM-Classification	EC000451

23.05.2026

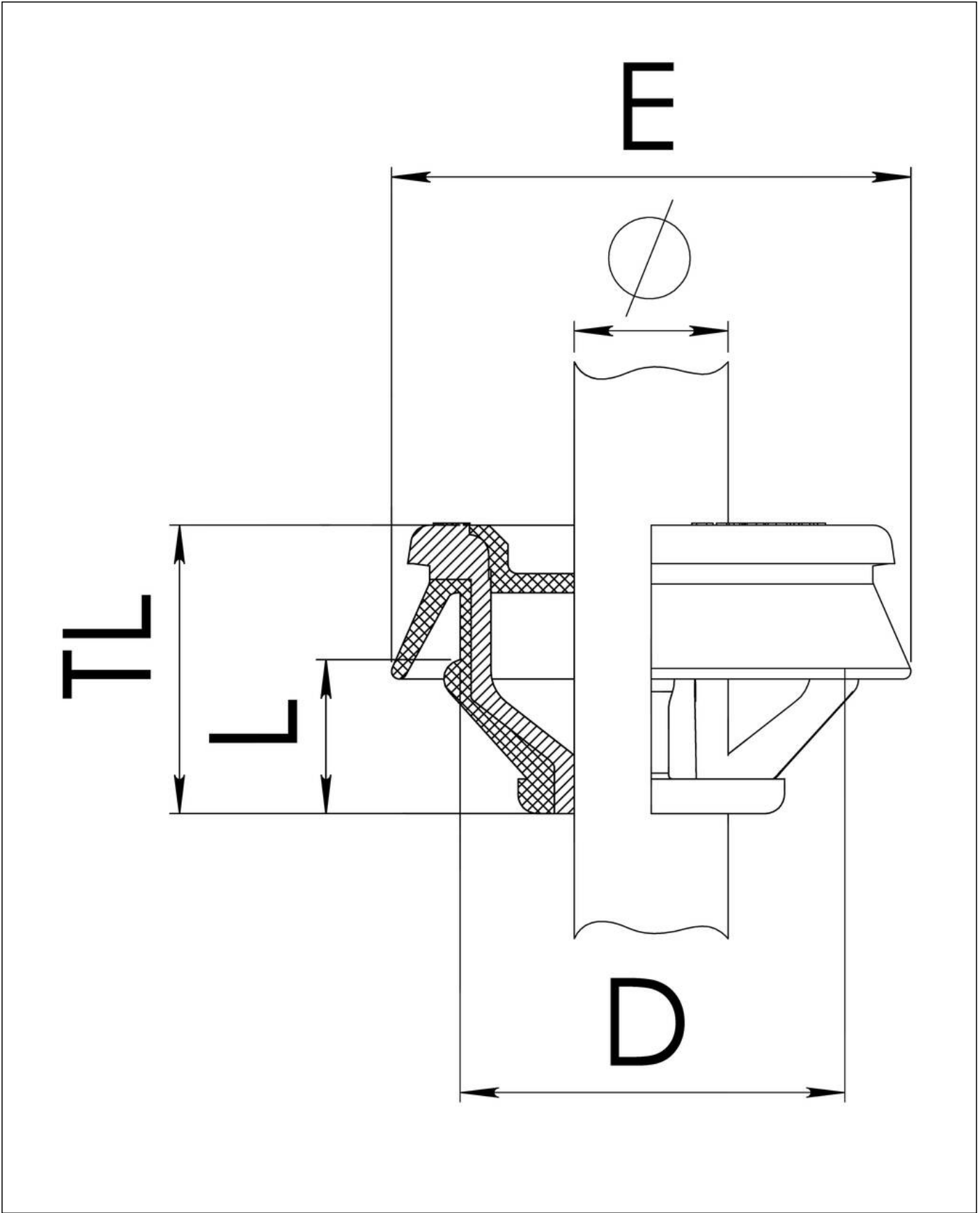
Your Contact:

WISKA Hoppmann GmbH

Kisdorfer Weg 28 · 24568 Kaltenkirchen · Germany

☎ +49-4191-508-0 · 📠 +49-4191-508-209

contact@wiska.de · www.wiska.com



Your Contact:
WISKA Hoppmann GmbH
Kisdorfer Weg 28 · 24568 Kaltenkirchen · Germany
☎ +49-4191-508-0 · 📠 +49-4191-508-209
contact@wiska.de · www.wiska.com