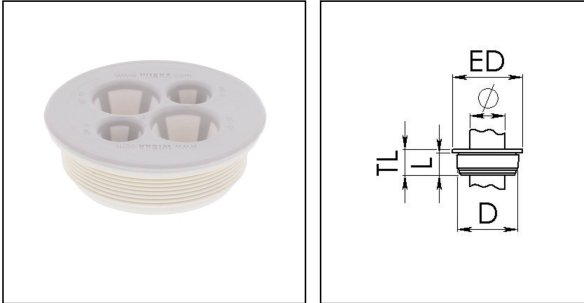


EMTZ 32/02/120-02/080 V0 LG

MultiCLIXX® Membrane cable entrie with strain relief, plastic, RAL 7035, M32



Products may differ in size, colour and appearance to those shown. If you require further information or customisation, please contact us directly.



Material	Polypropylene
Material membrane	TPE
Temp. range min	-30 °C
Temp. range max	80 °C
Glow wire test	960 °C
Protection class	IP66
Ø Connection thread D	32
Length screw-in thread L	9,5 mm
Ø cable diameter min	4 mm
Ø cable diameter max	12 mm
External diameter ED	37 mm
Total length TL	12 mm
Ø Drilling	32 mm
Wall thickness S	2 mm
Product Color	RAL 7035
Order no. RAL 7035	10108616
Type	EMTZ 32/02/120-02/080 V0 LG
Packing unit	50
ETIM-Classification	EC000451

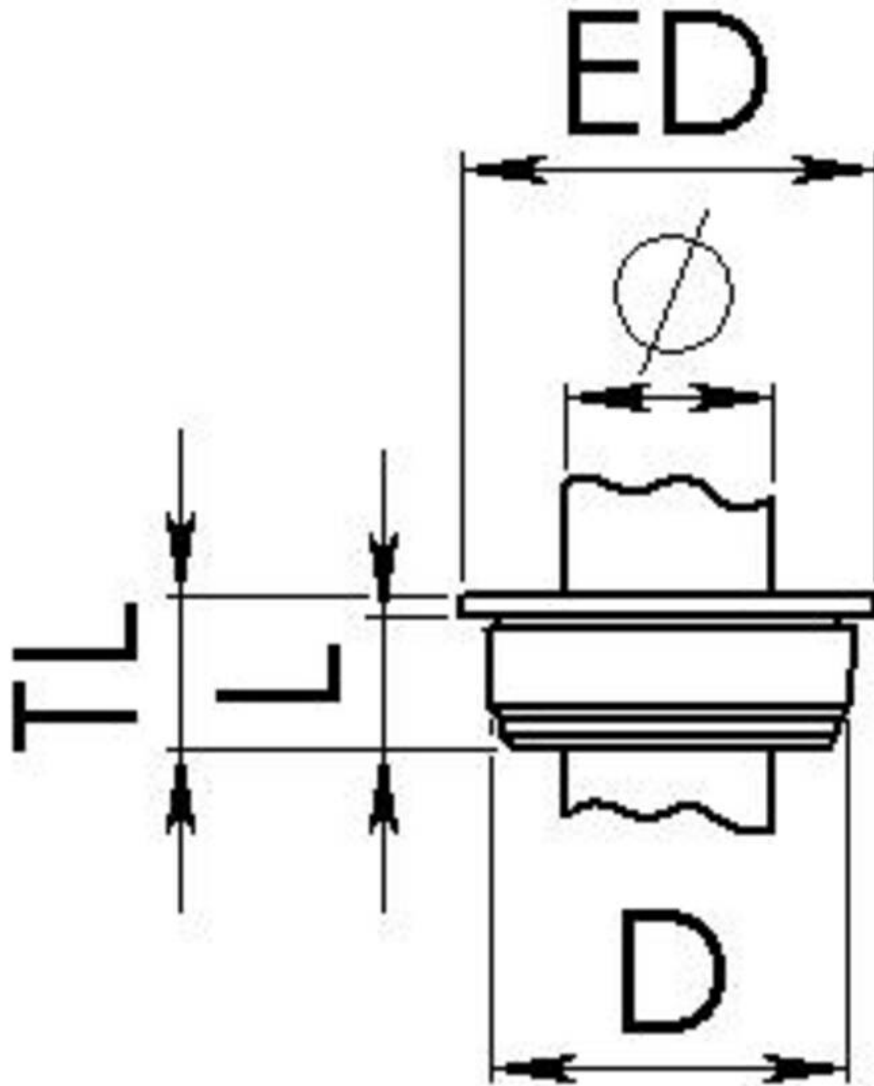
Remarks:

- Flammability: UL94-V0
- for cable entries 2 x 7-12mm + 2 x 4-8mm

12.05.2026

Your Contact:

WISKA Hoppmann GmbH
Kisdorfer Weg 28 · 24568 Kaltenkirchen · Germany
☎ +49-4191-508-0 · 📠 +49-4191-508-209
contact@wiska.de · www.wiska.com



Your Contact:

WISKA Hoppmann GmbH

Kisdorfer Weg 28 · 24568 Kaltenkirchen · Germany

☎ +49-4191-508-0 · 📠 +49-4191-508-209

contact@wiska.de · www.wiska.com