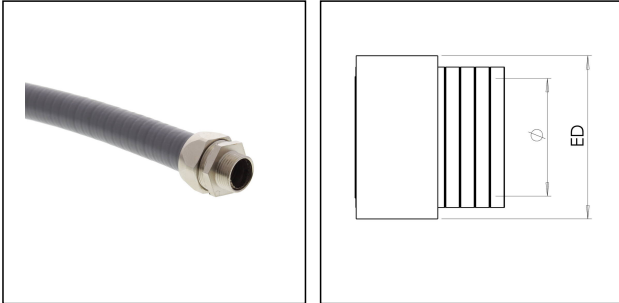


BMCG-PVC-S-35-LG

Conduit, galvanized steel, PVC coated, smooth, RAL 7035, NW35



Products may differ in size, colour and appearance to those shown. If you require further information or customisation, please contact us directly.



Material	galvanized steel
Sheathing material 1st coating	PVC
Surface	smooth
Product Color	RAL 7005
Protection class	IP67
Temp. range min	-15 °C
Temp. range max	80 °C
Operational areas	Mechanical plant engineering
NW	35
External diameter ED	43 mm
Ø inside	34,5 mm
Bending radius R	150 mm
Type	BMCG-PVC-S-35-LG
WISKA-Order no.	10109036
Packing unit	30 m
EAN number	4007686079661
Tariff number	83071000
ETIM-Classification	EC001179

Recommended accessories

EMBMFS-S-35-40	10109111
-----------------------	----------

23.05.2026

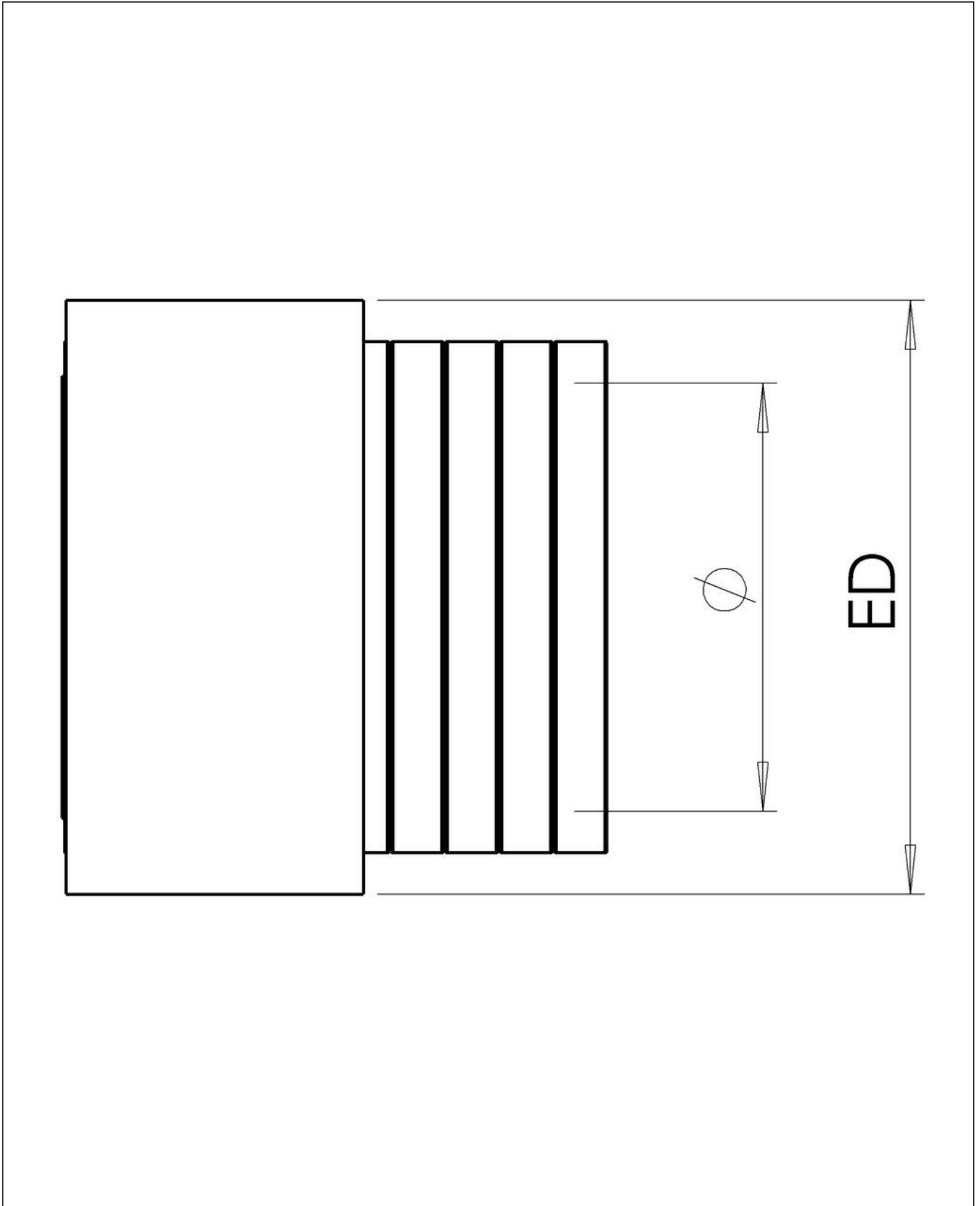
Your Contact:

WISKA Hoppmann GmbH

Kisdorfer Weg 28 · 24568 Kaltenkirchen · Germany

☎ +49-4191-508-0 · 📠 +49-4191-508-209

contact@wiska.de · www.wiska.com



Your Contact:

WISKA Hoppmann GmbH

Kisdorfer Weg 28 · 24568 Kaltenkirchen · Germany

☎ +49-4191-508-0 · 📠 +49-4191-508-209

contact@wiska.de · www.wiska.com