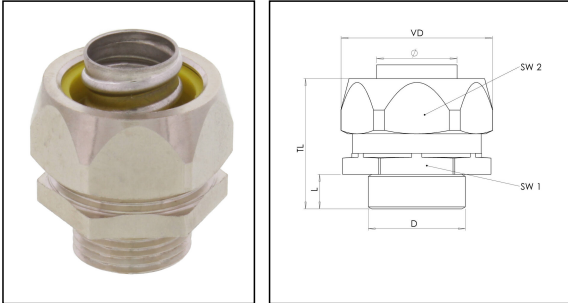


EMBMFS-C-16-20

Metal Conduit fitting brass nickel-plated, NW16/M20, corrugated



Products may differ in size, colour and appearance to those shown. If you require further information or customisation, please contact us directly.



Material Conduit fitting	Brass nickel-plated
Material sealing gasket	PA
Protection class	IP67
Temp. range min	-45 °C
Temp. range max	145 °C
Operational areas	Railway technology
NW	16
Thread type	M
Ø Connection thread D	20
Lead	1,5
Length screw-in thread L	9 mm
Ø closure VD	33 mm
Ø inside	15,5 mm
Key width SW1	27 mm
Key width SW2	29 mm
Total length TL	33,5 mm
Using for Conduit	corrugated
Torque nozzle	5 N m
Torque cap nut	5 N m
Type	EMBMFS-C-16-20
WISKA-Order no.	10109098
Packing unit	5
EAN number	4007686080919
Tariff number	74122000
ETIM-Classification	EC001180

Your Contact:

WISKA Hoppmann GmbH

Kisdorfer Weg 28 · 24568 Kaltenkirchen · Germany

☎ +49-4191-508-0 · 📠 +49-4191-508-209

contact@wiska.de · www.wiska.com

Recommended accessories

BMCG-PVC-C-16-BK	10109009
BMCG-PVC-C-16-LG	10109017
BMCG-PU-C-16-BK	10109057
BMCG-PU-C-16-BL	10109065
BMCG-PU-C-16-LG	10109073
BMCG-PVC-C-BG-16	10109081

23.05.2026

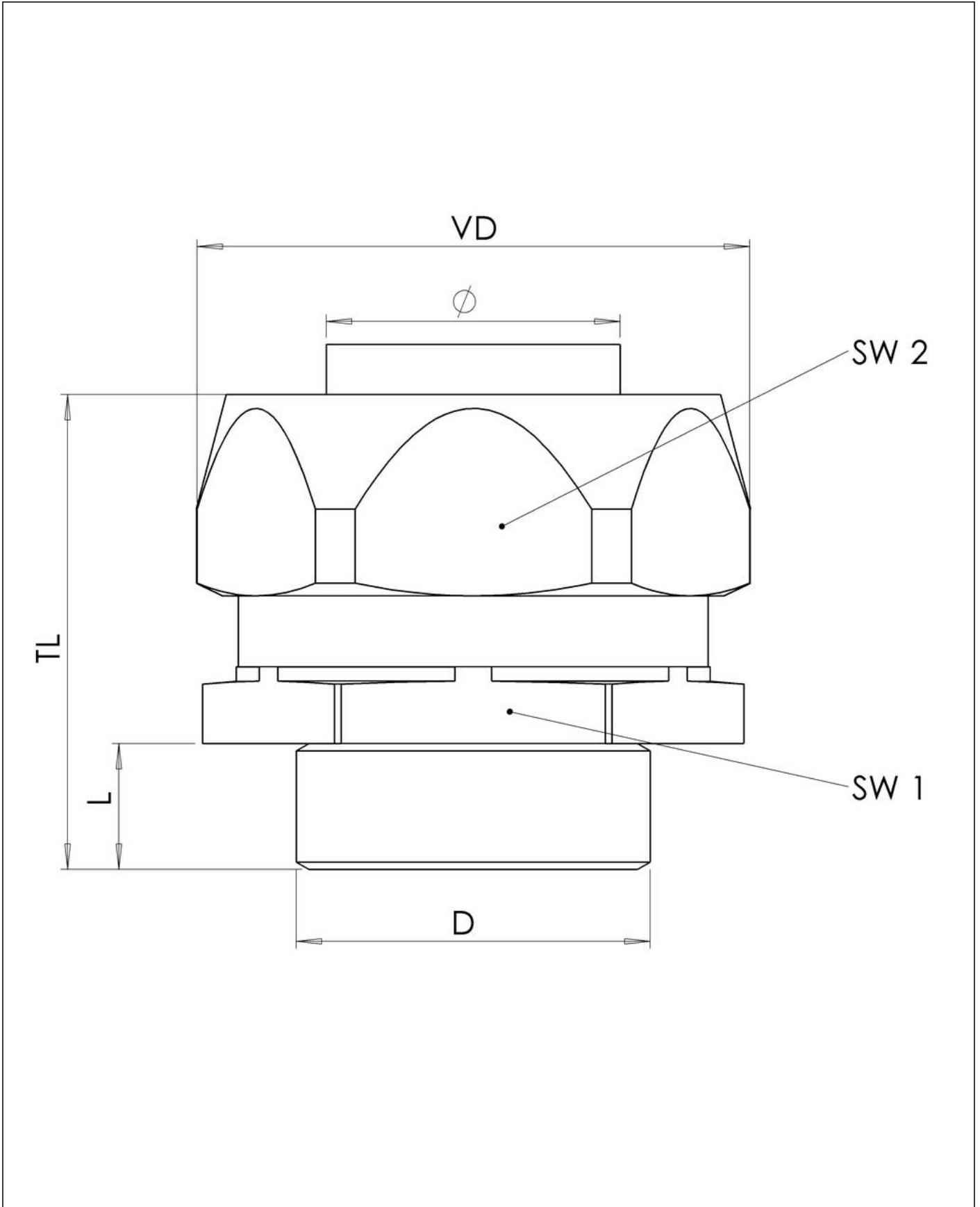
Your Contact:

WISKA Hoppmann GmbH

Kisdorfer Weg 28 · 24568 Kaltenkirchen · Germany

 +49-4191-508-0 ·  +49-4191-508-209

contact@wiska.de · www.wiska.com



Your Contact:

WISKA Hoppmann GmbH

Kisdorfer Weg 28 · 24568 Kaltenkirchen · Germany

☎ +49-4191-508-0 · 📠 +49-4191-508-209

contact@wiska.de · www.wiska.com