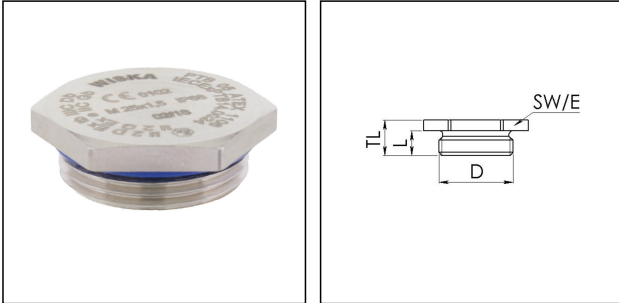


## EX-EMVS 20 LT

Ex stop end, brass nickel-plated, LowTemp, with O-ring silicone, M20



Products may differ in size, colour and appearance to those shown. If you require further information or customisation, please contact us directly.



<b>Material</b>	Brass nickel-plated
<b>Material sealing gasket</b>	Silicone
<b>Temp. range min</b>	-60 °C
<b>Temp. range max</b>	120 °C
<b>Protection class</b>	IP66 / IP68 (5 bar 30 min)
<b>Type of protection</b>	Ex tb, Ex e
<b>Ex-Certificate</b>	IECEX, ATEX
<b>Thread type</b>	M
<b>Ø Connection thread D</b>	20
<b>Lead</b>	1,5
<b>Length screw-in thread L</b>	6 mm
<b>Key width SW</b>	22 mm
<b>Collar diameter (E)</b>	25 mm
<b>Total length TL</b>	9 mm
<b>Surface</b>	Nickel-plated
<b>Order no. nickel-plated</b>	10109792
<b>Type</b>	EX-EMVS 20 LT
<b>Packing unit</b>	10
<b>EAN number</b>	4007686101461
<b>Tariff number</b>	74198090
<b>ETIM-Classification</b>	EC000032

### Recommended accessories

Your Contact:

WISKA Hoppmann GmbH

Kisdorfer Weg 28 · 24568 Kaltenkirchen · Germany

☎ +49-4191-508-0 · 📠 +49-4191-508-209

contact@wiska.de · www.wiska.com

12.05.2026

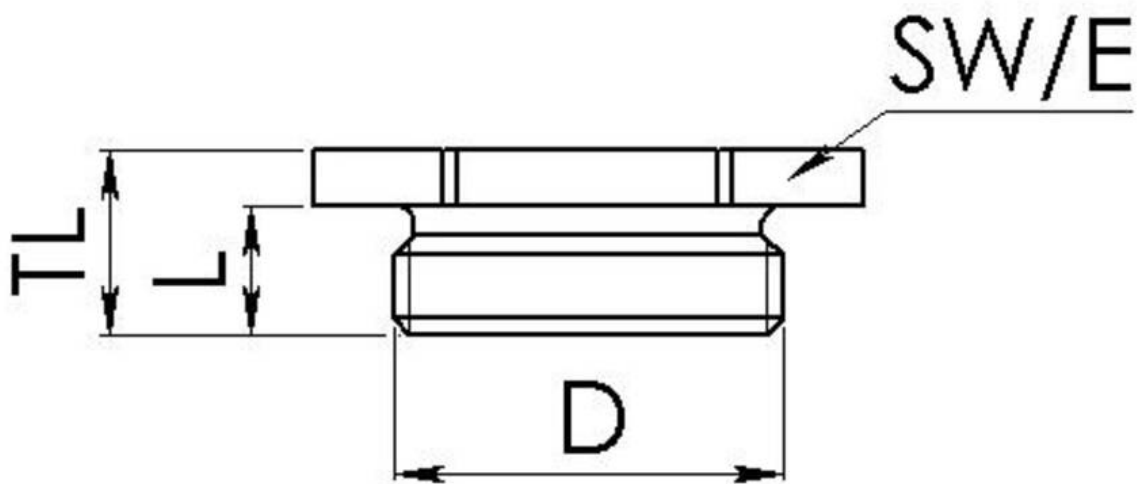
Your Contact:

**WISKA Hoppmann GmbH**

Kisdorfer Weg 28 · 24568 Kaltenkirchen · Germany

 +49-4191-508-0 ·  +49-4191-508-209

[contact@wiska.de](mailto:contact@wiska.de) · [www.wiska.com](http://www.wiska.com)



Your Contact:

**WISKA Hoppmann GmbH**

Kisdorfer Weg 28 · 24568 Kaltenkirchen · Germany

☎ +49-4191-508-0 · 📠 +49-4191-508-209

contact@wiska.de · www.wiska.com