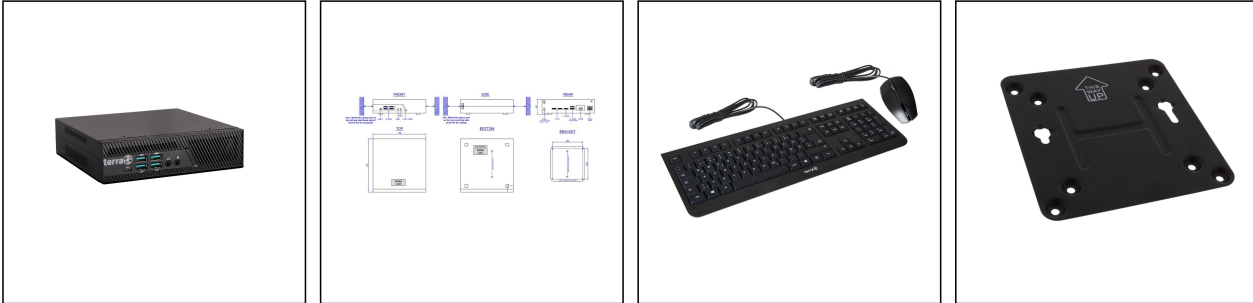


COM4SHIP/MICRO-5.1/24IP/4TB



Products may differ in size, colour and appearance to those shown. If you require further information or customisation, please contact us directly.

Type	COM4SHIP/MICRO-5.1/24IP/4TB
WISKA-Order no.	10113212
Casing	NUC
Material	Aluminium
Colour	Black
Operational areas	Indoor
Mounting	Surface mounting
Temp. range min	-30 °C
Temp. range max	50 °C
operating system	WIN10/64bit
Software	WISKA server
Processor	Intel i7
HDD (Video) type	DDR4/16GB
SSD/HDD (OS) type	SSD/256GB
SSD (Video) type	4TB
Ethernet	1 x GB-LAN/RJ45
Port	5x USB 3.0
Monitor Interface	DP/HDMI
Monitor max.	3 ST
Camera IP max.	24 ST
Bluetooth	Yes
Voltage	100 V - 240 V
Type of Voltage	AC
Frequence	50/60 Hz
Wattage	150 W

Your Contact:

WISKA Hoppmann GmbH

Kisdorfer Weg 28 · 24568 Kaltenkirchen · Germany

☎ +49-4191-508-0 · 📠 +49-4191-508-209

contact@wiska.de · www.wiska.com

Weight	1,3 kg
Tariff number	84715000

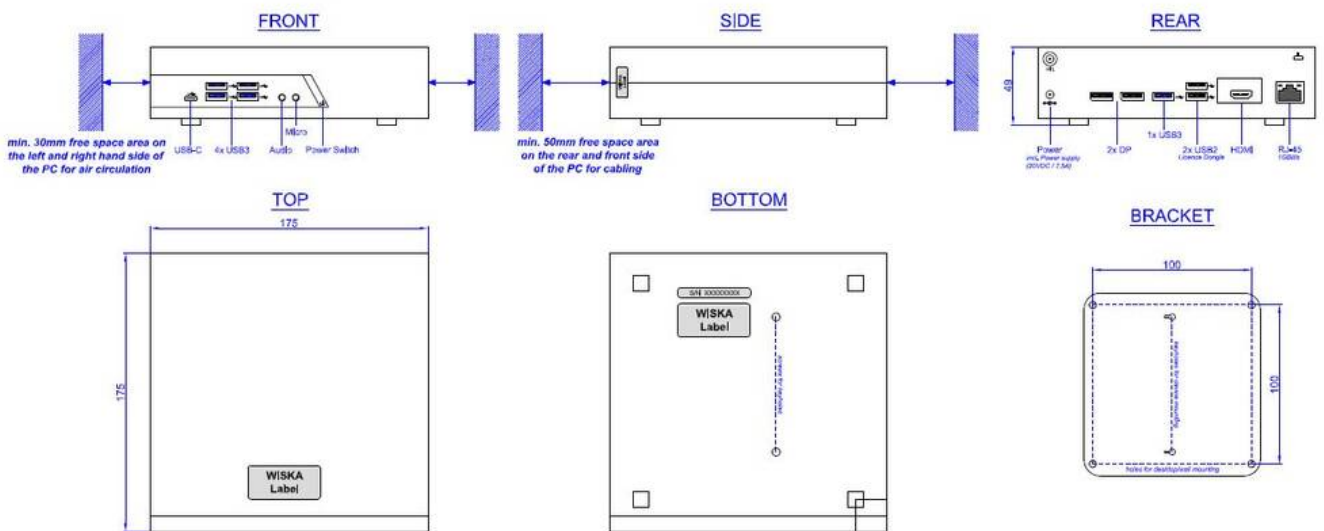
Remarks:

WISKA VIEW COM4SHIP® Micro with
Standard configuration, incl.
Operating system WINx, Intel i7 processor,
4TB 24/7 SSD, MIL-STD-810H.
USB standard keyboard (US layout)
and USB mouse
WISKA VIEW CCTV server software
is installed
Software dongle for:
24x IP-PTZ camera station
Contains:
1x power supply (110-240VAC),
1x patch cable Cat6 / 2m
2x RJ45 connectors
Incl. Vesa100 mounting kit

12.05.2026

Your Contact:

WISKA Hoppmann GmbH
Kisdorfer Weg 28 · 24568 Kaltenkirchen · Germany
☎ +49-4191-508-0 · 📠 +49-4191-508-209
contact@wiska.de · www.wiska.com



Your Contact:

WISKA Hoppmann GmbH

Kisdorfer Weg 28 · 24568 Kaltenkirchen · Germany

+49-4191-508-0 · +49-4191-508-209

contact@wiska.de · www.wiska.com