

Instruções de uso - Operating instructions - Mode d'emploi

Redutores, expansões, adaptadores
reducers, extensions and adapters
réducteurs, extensions et adaptateurs

EX-KEM **/**

EX-KRM **/**

EX-APM **/**



WISKA Hoppmann GmbH

Kisdorfer Weg 28 • D-24568 Kaltenkirchen

Tel. / Phone / Tél. +49 (0) 4191 508-100 • Fax +49 (0) 4191 508-249

E-Mail wiska@wiska.de • Internet www.wiska.de

Instruções de uso

Aplicação

Os redutores, extensões e os adaptadores são usados se as aberturas (roscadas) nos meios de operação elétricos de proteção contra a ignição aumentada tipo "e" e "t" tiverem outro tamanho nominal do que a rosca de conexão da passagem de cabo ou tampões roscados a aplicar do tipo de proteção contra a ignição Segurança aumentada "e" e "t".

Objetivo desse manual Ao trabalhar em atmosferas explosivas, a segurança de pessoas e das instalações depende do cumprimento de todos os regulamentos de segurança relevantes. Sicherheitsvorschriften ab.

O pessoal de montagem e de manutenção que trabalha nesse tipo de instalações tem, portanto, uma responsabilidade especial. O pré-requisito para isso é o conhecimento preciso das regras e dos regulamentos aplicáveis.

Esse manual resume brevemente as medidas de segurança mais importantes. Ele complementa os respetivos regulamentos que o pessoal responsável é obrigado a estudar.

Reserva-se o direito a alterações.



Avisos de segurança Safety instructions Consignes de sécurité

Utilize exclusivamente os redutores, expansões, adaptadores para o fim de uso admissível.

O uso incorreto ou não autorizado e o não cumprimento das instruções desse manual de operação excluem qualquer garantia de nossa parte.

Não são permitidas modificações e alterações nos redutores, expansões e adaptadores que afetam a proteção contra explosões.

Os redutores, expansões e adaptadores somente podem ser usados em condições limpas e sem danos e com um anel o-ring.

No caso de montagem e de operação, deve observar-se o seguinte:

- normas de segurança nacionais;
- normas de prevenção de acidentes nacionais
- regulamentos nacionais de montagem e de construção (p. ex., IEC 60079-14)
- normas geralmente reconhecidas da técnica;
- avisos de segurança deste manual de instruções;
- Valores característicos dos redutores, expansões e adaptadores

Qualquer dano pode invalidar a proteção Ex

Operating instructions

Application

The reducers, extensions and adapters are used when the (threaded) openings in the casings of electrical equipment meeting the type of protection "e" and "t" have a different nominal size from the mating threads of the cable and conductor inlet or the sealing plugs, where these also have type of protection "e" and "t".

Purpose of these instructions

Working in hazardous areas, the safety of personnel and plant depends on complying with all relevant safety regulations.

Assembly and maintenance staff working on installations therefore have a particular responsibility.

They require precise knowledge of the applicable standards and regulations.

These instructions give a brief summary of the most important safety measures. It supplements the corresponding regulations which the staff responsible must study.

Subject to alteration.

Use the reducers, extensions and adapters only for its intended purpose.

Incorrect or impermissible use or non-compliance with these instructions invalidates our warranty provision.

No changes to the device impairing is explosion protection are permitted.

Use the reducers, extensions and adapters only if they are clean and undamaged.

Observe the following during installation and operation:

- national safety regulations
- national accident prevention regulations
- national installation regulations (e.g. IEC 60079-14)
- generally recognized technical regulations
- safety guidelines in these operating instructions
- characteristic values given on the reducers, extensions and adapters

Any damage can invalidate the Ex-protection.

Mode d'emploi

Utilisation

Les réducteurs, extensions et adaptateurs sont utilisés lorsque les ouvertures (de filet) du matériel électrique avec le type de protection augmentée "e" et "t" possèdent une autre grandeur nominale que celle des filets de raccordement des entrées de câble et de conduite à installer ou des vis de fermeture avec le type de protection augmentée "e" et "t".

Objet du présent mode d'emploi

Lors du travail dans des zones à risque d'explosion, la sécurité des personnes et des installations dépend du respect de toutes les consignes de sécurité correspondantes.

Le personnel chargé du montage et de la maintenance sur ces équipements possède à cet égard une grande responsabilité et doit connaître parfaitement les prescriptions et dispositions légales en vigueur.

Le présent mode d'emploi résume de façon concise les mesures de sécurité les plus importantes. Il ne peut en aucun cas se substituer aux prescriptions correspondantes, dont l'étude demeure obligatoire pour le personnel responsable.

Sous réserve de modifications.

Les réducteurs, extensions et adaptateurs ne doivent être utilisées que pour l'application pour laquelle elle ont été prévues.

Une utilisation défectueuse ou anormale ainsi que le non-respect des consignes du présent mode d'emploi excluent toute clause de garantie.

Les modifications sur les réducteurs, extensions et adaptateurs, susceptibles d'entraver la protection antidéflagrante, ne sont pas autorisées.

Ne pas monter les réducteurs, extensions et adaptateurs si elles sont endommagées ou sales.

Lors du montage et du fonctionnement, veuillez observer les points suivants:

- les prescriptions nationales de sécurité
- les prescriptions nationales en matière de prévention des accidents
- les instructions nationales de montage (par. Ex. CEI 60079-14)
- les règles de l'art dans le domaine technique
- les consignes de sécurité du présent mode d'emploi
- les caractéristiques techniques indiquées sur les réducteurs, extensions et adaptateurs

Toute détérioration de matériel peut avoir pour conséquence de rendre inopérante la protection antidéflagrante.



Teremos o prazer de lhe enviar uma cópia do certificado de exame de tipo CE junto com o anexo associado, If required, we will provide a copy of the Type-Test Certificate with the relevant annex.

Une copie du certificat de conformité aux normes ainsi que les annexes correspondantes sont disponibles sur simple demande.

Instruções de uso	Operating instructions	Mode d'emploi
-------------------	------------------------	---------------

1 Conformidade com as normas

Os redutores, expansões e adaptadores regulamentos e normas:
 - Portaria INMETRO no. 115:2022
 - Diretiva 2014/34/UE
 - IEC 60079-0:2017,Ed 7.0 (EN 60079-0:2018)
 - IEC 60079-7:2017,Ed 5.1 (EN 60079-7:2015)
 - IEC 60079-31:2022,Ed 3 (EN 60079-31:2014)
 - EN 62444:2013

Os redutores, expansões e adaptadores é admissível para o uso em atmosferas explosivas das zonas 1, 21, 2 e 22.

2 Dados técnicos

Proteção contra explosões:

Certificado de inspeção:

Material:
 Poliamida

Temperatura ambiente:

Grau de proteção conforme a IEC 60529:

Torques recomendados

As reduções, expansões e adaptadores são fixados com o torque da rosca maior ao meio de produção /
 The reducers, extensions and adapters are attached to the equipment with the torque of the larger thread /
 Les réducteurs, extensions et adaptateurs sont attachés au couple du plus grand fil sur la ressource

Tamanho da rosca / size of thread / taille de filetage

M [Nm]

M12x1,5; Pg 7	2,0
M16x1,5; Pg 9; Pg 11	3,0
M20x1,5; Pg 13,5	3,5
M25x1,5; Pg 16	4,0
M32x1,5; Pg 21	5,0
M40x1,5; Pg 29	12,0
M50x1,5; Pg 36; Pg 42	15,0
M63x1,5; Pg 48	20,0

As passagens de cabo a serem usadas devem ser instaladas com o seu torque indicado. Se o torque de instalação da passagem de cabo for superior ao torque da rosca exterior do redutor, expansor ou adaptador, deve oferecer-se resistência com a respetiva ferramenta (chave de boca) no hexágono.

The cable and conductor inlets being used must be installed with the torque stated. If the torque required to install the CCI is larger than that available at the external thread of the reducer, extension or adapter, then an appropriate tool (a hexagonal spanner) must be used to support the hexagonal nut. /

Les entrée de câble et de conduite à utiliser doivent être installées avec leur couple correspondant indiqué. Si le couple d'installation de l'ECC est plus grand que le couple du filet extérieur du réducteur, de l'extension ou de l'adaptateur, il convient d'exercer une contre-force de maintien au niveau de l'hexagone au moyen d'un outil approprié (clé à six pans).



Grau do perigo mecânico:

Level of mechanical hazard:

Degré de risque mécanique:

Tipo de EX-KEM **/**, EX-KRM **/**, EX-APM **/** /
 types of EX-KEM **/**, EX-KRM **/**, EX-APM **/** /
 types de EX-KEM **/**, EX-KRM **/**, EX-APM **/**

Área da temperatura ambiente no local de aplicação/
 Ambient temperature range on site /

Plage de température ambiante sur le site

EX-KEM 12/16; EX-APM 7/12; EX-APM 7/16
 EX-KEM 16/20; EX-KRM 16/12; EX-APM 9/12; EX-APM 9/16; EX-APM 9/20
 EX-KEM 20/20; EX-KEM 20/25; EX-KRM 20/16
 EX-KEM 25/32; EX-KEM 32/40; EX-KEM 40/50; EX-KEM 50/63;
 EX-KRM 20/12; EX-KRM 25/**; EX-KRM 32/**; EX-KRM 40/**;
 EX-KRM 50/**; EX-KRM 63/**;
 EX-APM 11/**; EX-APM 13,5/**; EX-APM 16/**; EX-APM 21/**;
 EX-APM 29/**; EX-APM 36/**; EX-APM 42/**; EX-APM 48/**

-40°C ... -25°C -25°C ... +75°C

C	B	B
B	B	A
B	A	A

A = permitido para a montagem com elevado risco de danos mecânicos /
 approved for installation with the risk of mechanical hazard high /
 approuvé pour installation avec le risque de mécanique risque élevé
 permitido para a montagem com baixo risco de danos mecânicos /
 approved for installation with the risk of mechanical hazard low /
 approuvé pour installation avec le risque de mécanique risque faible
 Não autorizado para instalação /
 C = Not suitable for installation /
 Ne convient pas pour l'installation

2 Technical Data

Explosion protection:

II 2 G Ex eb IIC Gb / II 2 D Ex tb IIIC Db

Test certificate:

IECEx PTB 16.0026X, PTB 04 ATEX 1040 X, UL22UKEX2674X, UL-BR 21.1135X

Material:
 polyamide

Ambient temperature:

-40°C+75°C

Degree of protection to IEC 60529:

IP66/68 (5bar; 30min)

Recommended torques:

Couples recommandés:

Certificat de conformité:

2 Caractéristiques techniques

Protection antidéflamrante:

1 Conformité aux normes

Les bouchons filetés sont conformes aux prescriptions et normes suivantes:
 - Directive 2014/34/UE
 - UKSI 2016:1107 (as amended by UKSI 2019:696) – Schedule 3A, Part 1
 - IEC 60079-0:2017 (EN 60079-0:2018)
 - IEC 60079-7:2015 (EN 60079-7:2015)
 - IEC 60079-31:2022 (EN 60079-31:2014)

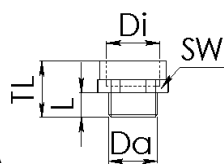
L'utilisation des réducteurs, extensions et adaptateurs EX-KEM **/**, EX-KRM **/**, EX-APM **/** est autorisée en atmosphère explosible des zones 1, 21, 2 et 22.

3 Montagem

Esboço dimensionado

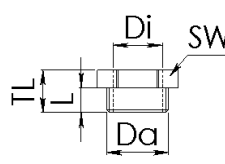
3 Fitting

Dimensions



3 Montage

Plan d'encombrement



Forma/Forme A

Forma/Forme B

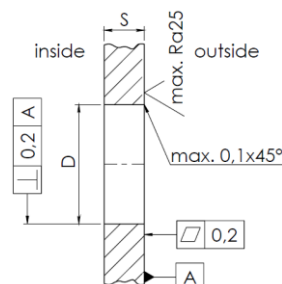
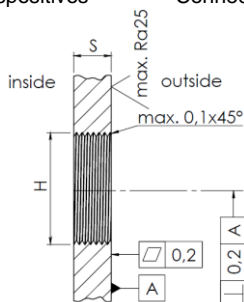
Tipo / Type / Type	Forma/Forme	Da [mm]	Di [mm]	L [mm]	TL [mm]	SW [mm]
EX-KRM 16/12	A	M16x1,5	M12x1,5	9	27	20
EX-KRM 20/12	B	M20x1,5	M12x1,5	9	16	24
EX-KRM 20/16	A	M20x1,5	M16x1,5	9	27	24
EX-KRM 25/12	B	M25x1,5	M12x1,5	10	17	29
EX-KRM 25/16	B	M25x1,5	M16x1,5	10	17	29
EX-KRM 25/20	B	M25x1,5	M20x1,5	10	17	29
EX-KRM 32/16	B	M32x1,5	M16x1,5	12	19	36
EX-KRM 32/20	B	M32x1,5	M20x1,5	12	19	36
EX-KRM 32/25	B	M32x1,5	M25x1,5	12	19	36
EX-KRM 40/20	B	M40x1,5	M20x1,5	12	19	46
EX-KRM 40/25	B	M40x1,5	M25x1,5	12	19	46
EX-KRM 40/32	B	M40x1,5	M32x1,5	12	19	46
EX-KRM 50/20	B	M50x1,5	M20x1,5	14	21	55
EX-KRM 50/25	B	M50x1,5	M25x1,5	14	21	55
EX-KRM 50/32	B	M50x1,5	M32x1,5	14	21	55
EX-KRM 50/40	B	M50x1,5	M40x1,5	14	21	55
EX-KRM 63/20	B	M63x1,5	M20x1,5	15	22	68
EX-KRM 63/25	B	M63x1,5	M25x1,5	15	22	68
EX-KRM 63/32	B	M63x1,5	M32x1,5	15	22	68
EX-KRM 63/40	B	M63x1,5	M40x1,5	15	22	68
EX-KRM 63/50	B	M63x1,5	M50x1,5	15	22	68
EX-KEM 12/16	A	M12x1,5	M16x1,5	9	27	20
EX-KEM 16/20	A	M16x1,5	M20x1,5	9	27	24
EX-KEM 20/20	A	M20x1,5	M20x1,5	9	27	24
EX-KEM 20/25	A	M20x1,5	M25x1,5	9	27	29
EX-KEM 25/32	A	M25x1,5	M32x1,5	10	28	36
EX-KEM 32/40	A	M32x1,5	M40x1,5	12	30	46
EX-KEM 40/50	A	M40x1,5	M50x1,5	12	30	55
EX-KEM 50/63	A	M50x1,5	M63x1,5	14	32	68
EX-APM 7/12	A	Pg 7	M12x1,5	9	27	16
EX-APM 7/16	A	Pg 7	M16x1,5	9	27	20
EX-APM 9/12	A	Pg 9	M12x1,5	9	27	20
EX-APM 9/16	A	Pg 9	M16x1,5	9	27	20
EX-APM 9/20	A	Pg 9	M20x1,5	9	27	24
EX-APM 11/16	A	Pg 11	M16x1,5	9	27	22
EX-APM 11/20	A	Pg 11	M20x1,5	9	27	24
EX-APM 11/25	A	Pg 11	M25x1,5	9	27	29
EX-APM 13,5/16	A	Pg 13,5	M16x1,5	10	28	24
EX-APM 13,5/20	A	Pg 13,5	M20x1,5	10	28	24
EX-APM 13,5/25	A	Pg 13,5	M25x1,5	10	28	29
EX-APM 16/20	A	Pg 16	M20x1,5	10	28	27
EX-APM 16/25	A	Pg 16	M25x1,5	10	28	29
EX-APM 16/32	A	Pg 16	M32x1,5	10	28	36
EX-APM 21/20	A	Pg 21	M20x1,5	12	30	33
EX-APM 21/25	A	Pg 21	M25x1,5	12	30	33
EX-APM 21/32	A	Pg 21	M32x1,5	12	30	36
EX-APM 21/40	A	Pg 21	M40x1,5	12	30	46
EX-APM 29/20	B	Pg 29	M20x1,5	12	19	42
EX-APM 29/25	B	Pg 29	M25x1,5	12	19	42
EX-APM 29/32	B	Pg 29	M32x1,5	12	19	42
EX-APM 29/40	A	Pg 29	M40x1,5	12	30	46
EX-APM 29/50	A	Pg 29	M50x1,5	12	30	55
EX-APM 36/20	B	Pg 36	M20x1,5	14	21	53
EX-APM 36/25	B	Pg 36	M25x1,5	14	21	53
EX-APM 36/32	B	Pg 36	M32x1,5	14	21	53
EX-APM 36/40	B	Pg 36	M40x1,5	14	21	53
EX-APM 36/50	A	Pg 36	M50x1,5	14	32	55
EX-APM 36/63	A	Pg 36	M63x1,5	14	32	68
EX-APM 42/20	B	Pg 42	M20x1,5	14	21	60
EX-APM 42/25	B	Pg 42	M25x1,5	14	21	60

Instruções de uso		Operating instructions		Mode d'emploi		
Tipo / Type / Type	Forma/Forme	Da [mm]	Di [mm]	L [mm]	TL [mm]	SW [mm]
EX-APM 42/32	B	Pg 42	M32x1,5	14	21	60
EX-APM 42/40	B	Pg 42	M40x1,5	14	21	60
EX-APM 42/50	A	Pg 42	M50x1,5	14	32	60
EX-APM 42/63	A	Pg 42	M63x1,5	14	32	68
EX-APM 48/20	B	Pg 48	M20x1,5	15	22	65
EX-APM 48/25	B	Pg 48	M25x1,5	15	22	65
EX-APM 48/32	B	Pg 48	M32x1,5	15	22	65
EX-APM 48/40	B	Pg 48	M40x1,5	15	22	65
EX-APM 48/50	B	Pg 48	M50x1,5	15	22	65
EX-APM 48/63	A	Pg 48	M63x1,5	15	33	68

Dimensões de conexão dos dispositivos

Connection dimensions of the devices

Dimensions de raccordement des appareils



Espessura da parede com furo rosqueado / Wall thickness with threaded hole / Épaisseur de la paroi avec trou fileté

H	Norma / standard / norme	Caixa de metal / Metal housings / Boîtier en métallique	Caixa de plástico / Plastic housings / Boîtier en plastique
M12x1,5; M16x1,5; M20x1,5; M25x1,5; M32x1,5; M40x1,5; M50x1,5; M63x1,5; M75x1,5	ISO 965	≥ 3mm	≥ 4mm
Pg 7; Pg 9; Pg 11; Pg 13,5; Pg 16; Pg 21; Pg 29; Pg 36; Pg 42; Pg 48	DIN 40430	≥ 3mm	≥ 4mm

Espessura da parede com furo passante / Wall thickness with through-hole / Épaisseur de la paroi avec trou traversant

Tamanho da rosca da conexão / Connection thread size / Taille du filetage de connexion	D [mm]	Caixa de metal / Metal housings / Boîtier en métallique		Caixa de plástico / Plastic housings / Boîtier en plastique		profundidade mínima da porca / minimum nut depth / Épaisseur minimale de l'écrou	
		Porca - Metal / Nut - Metal / l'écrou - Métal	Porca - plástico / Nut - Plastic / l'écrou - Plastique	Porca - Metal / Nut - Metal / l'écrou - Métal	Porca - plástico / Nut - Plastic / l'écrou - Plastique	Metal / Metal / Métal	Plástico / Plastic / Plastique
M12x1,5	12,0+0,2	(1,0 - 6,0)mm	(1,0 - 4,0)mm	(2,0 - 6,0)mm	(2,0 - 4,0)mm	2,8mm	5,0mm
M16x1,5	16,0+0,2	(1,0 - 6,0)mm	(1,0 - 4,0)mm	(2,0 - 6,0)mm	(2,0 - 4,0)mm	2,8mm	5,0mm
M20x1,5	20,0+0,2	(1,0 - 6,0)mm	(1,0 - 4,0)mm	(2,0 - 6,0)mm	(2,0 - 4,0)mm	3,0mm	5,0mm
M25x1,5	25,0+0,2	(1,0 - 6,5)mm	(1,0 - 4,0)mm	(2,0 - 6,5)mm	(2,0 - 4,0)mm	3,5mm	6,0mm
M32x1,5	32,0+0,3	(1,0 - 8,0)mm	(1,0 - 6,0)mm	(2,0 - 8,0)mm	(2,0 - 6,0)mm	4,0mm	6,0mm
M40x1,5	40,0+0,3	(1,0 - 7,0)mm	(1,0 - 5,0)mm	(2,0 - 7,0)mm	(2,0 - 5,0)mm	5,0mm	7,0mm
M50x1,5	50,0+0,3	(1,0 - 9,0)mm	(1,0 - 7,0)mm	(2,0 - 9,0)mm	(2,0 - 7,0)mm	5,0mm	7,0mm
M63x1,5	63,0+0,3	(1,0 - 9,0)mm	(1,0 - 8,0)mm	(2,0 - 9,0)mm	(2,0 - 8,0)mm	6,0mm	7,0mm
Pg 7	12,6+0,2	(1,0 - 6,0)mm	(1,0 - 4,0)mm	(2,0 - 6,0)mm	(2,0 - 4,0)mm	2,8mm	5,0mm
Pg 9	15,3+0,2	(1,0 - 6,0)mm	(1,0 - 4,0)mm	(2,0 - 6,0)mm	(2,0 - 4,0)mm	2,8mm	5,0mm
Pg 11	18,7+0,2	(1,0 - 6,0)mm	(1,0 - 4,0)mm	(2,0 - 6,0)mm	(2,0 - 4,0)mm	3,0mm	5,0mm
Pg 13,5	20,5+0,2	(1,0 - 7,0)mm	(1,0 - 4,0)mm	(2,0 - 7,0)mm	(2,0 - 4,0)mm	3,0mm	6,0mm
Pg 16	22,6+0,2	(1,0 - 7,0)mm	(1,0 - 4,0)mm	(2,0 - 7,0)mm	(2,0 - 4,0)mm	3,0mm	6,0mm
Pg 21	28,4+0,2	(1,0 - 8,5)mm	(1,0 - 5,0)mm	(2,0 - 8,5)mm	(2,0 - 5,0)mm	3,5mm	7,0mm
Pg 29	37,1+0,3	(1,0 - 8,0)mm	(1,0 - 5,0)mm	(2,0 - 8,0)mm	(2,0 - 5,0)mm	4,0mm	7,0mm
Pg 36	47,1+0,3	(1,0 - 9,0)mm	(1,0 - 6,0)mm	(2,0 - 9,0)mm	(2,0 - 6,0)mm	5,0mm	8,0mm
Pg 42	54,1+0,3	(1,0 - 9,0)mm	(1,0 - 6,0)mm	(2,0 - 9,0)mm	(2,0 - 6,0)mm	5,0mm	8,0mm
Pg 48	59,4+0,3	(1,0 - 10,0)mm	(1,0 - 7,0)mm	(2,0 - 10,0)mm	(2,0 - 7,0)mm	5,0mm	8,0mm



Para outras condições de operação que não estejam de acordo com o padrão, consulte o fabricante. /
Please consult the manufacturer if operating conditions are non-standard. /
En cas de conditions d'utilisation différentes, veuillez contacter le constructeur.

Instruções de uso**Operating instructions****Mode d'emploi**

A responsabilidade relativa ao uso devido destes redutores, expansões e adaptadores com referência às condições básicas existentes na instalação recai exclusivamente sobre a empresa usuária.

O transporte e o armazenamento só são permitidos na embalagem original.

4 Colocação em serviço

Antes de colocar um aparelho em operação junto com os redutores, expansões e adaptadores, certifique-se de que

- os redutores, expansões e adaptadores não estão danificados;
- o anel o-ring está disponível para o grau de proteção IP 66/68
- os redutores, expansões e adaptadores estão apertados de acordo com os torques recomendados
- as superfícies de apoio estão em face com as juntas em face com as juntas

A instalação e a operação inadequadas invalidarão a garantia.

5 Manutenção

Observe os regulamentos nacionais aplicáveis no país de atuação! /
Observe the relevant national regulations for your country! /
Observez les réglementations en vigueur dans le pays d'utilisation!

Nos trabalhos de manutenção devem ser verificados os seguintes pontos:

- Cumprimento das temperaturas admissíveis (conforme a EN 60079-0)
- Fissuras nos redutores, expansões e adaptadores
- Danos nas juntas

The user alone is responsible for the appropriate use of this reducers, extensions and adapters in consideration of the basic conditions existing at the plant.

Transport and storage is permitted only in the original packaging.

4 Commissioning

Before commissioning equipment fitted with reducers, extensions and adapters, ensure that:

- the reducers, extensions and adapters are not damaged
- the O ring for IP68 is available
- the reducers, extensions and adapters have been tightened to the recommended torque values
- the gasket bearing areas are flat

Improper installation and operation leads to loss of warranty.

5 Maintenance

L'utilisation conforme aux dispositions de ces réducteurs, extensions et adaptateurs, en tenant compte des conditions cadre existants dans l'installation, est laissé à la seule responsabilité de l'exploitant.

Le transport et le stockage sont autorisés uniquement en emballage d'origine.

4 Mise en service

Avant la mise en service d'un appareil avec des réducteurs, extensions et adaptateurs, assurez-vous des points suivants:

- les réducteurs, extensions et adaptateurs ne sont pas endommagés
- la rondelle obturatrice pour le degré de protection IP68 a été utilisée
- les réducteurs, extensions et adaptateurs sont serrés conformément au couple recommandé
- les surfaces de contact pour les joints sont planes

Une installation et une exploitation incorrectes conduisent à la perte de la garantie.

5 Maintenance

The following points must checked during maintenance:

- compliance with permitted temperatures (to IEC 60079-0)
- cracks in the reducers, extensions and adapters
- damage to the gaskets

Lors des travaux d'entretien, les points suivants doivent être contrôlés:

- le maintien des températures autorisées (selon IEC 60079-0)
- la présence éventuelle de fissures sur les réducteurs, extensions et adaptateurs
- la détérioration des joints d'étanchéité

6 Acessório/peças de reposição**6 Accessories / Spare parts****6 Accessoires / Pièces de rechange**

Use apenas acessórios originais, bem como peças de reposição originais da empresa WISKA. /
Use only original spare parts as well as original accessories made by WISKA. /
Utilisez uniquement des pièces de rechange et des accessoires d'origine de WISKA.

Accessories / Accessoires / Accessoires	Número do artigo Order number / Référence	Accessories / Accessoires / Accessoires	Número do artigo Order number / Référence	Accessories / Accessoires / Accessoires	Número do artigo Order number / Référence	Use para... / Used for ... / Utilisation pour...			
Anel o-ring* / O-Ring* / Joint torique d'étanchéité*	9x1,5	10064697	contraporca (material de moldagem)** / Lock nut** (plastic) / contre-écrou** (plastique)	contraporca (metal)** / Lock nut** (metal) / contre-écrou** (métal)	EMUG 12	10061780	EMMU 12	10063141	M12x1,5
	13x1,5	10064698			EMUG 16	10061781	EMMU 16	10063142	M16x1,5
	17x1,5	10064699			EMUG 20	10061782	EMMU 20	10063143	M20x1,5
	22x2	10064700			EMUG 25	10061783	EMMU 25	10063144	M25x1,5
	29x2	10064701			EMUG 32	10061784	EMMU 32	10063145	M32x1,5
	37x2	10064702			EMUG 40	10061785	EMMU 40	10063146	M40x1,5
	47x2,5	10064703			EMUG 50	10061786	EMMU 50	10063147	M50x1,5
	60x2,5	10064704			EMUG 63	10061787	EMMU 63	10063148	M63x1,5
	9x1,5	10064697			MUG 7	10060680	MMU 7	10062141	Pg 7
	14x1,5	10104448			MUG 9	10060681	MMU 9	10062142	Pg 9
	17x1,5	10064699			MUG 11	10060682	MMU 11	10062143	Pg 11
	19x1,5	10104449			MUG 13,5	10060683	MMU 13,5	10062144	Pg 13,5
	21x2	10104451			MUG 16	10060684	MMU 16	10062145	Pg 16
	27x2,5	10104452			MUG 21	10060685	MMU 21	10062146	Pg 21
	36x2,5	10104454			MUG 29	10060686	MMU 29	10062147	Pg 29
	45x3	10104456			MUG 36	10060687	MMU 36	10062148	Pg 36
	52x3	10104457			MUG 42	10060688	MMU 42	10062149	Pg 42
	58x3	10104458			MUG 48	10060689	MMU 49	10062150	Pg 48

* Os anéis o-ring servem para atingir o tipo de proteção IP 66/68. 68 / The gaskets act as additional sealing to achieve the IP66/68 protection degree / Les d'étanchéité servent de joints supplémentaires pour atteindre la classe de protection IP66/68.

** A contraporca serve para fixar os redutores, expansões e adaptadores nos furos de passagem. / The lock nut is used to secure the locking screws in position. / Le contre-écrou est utilisé pour fixer bouchons filetés dans les trous de passage.



Observe a política nacional de resíduos sólidos. /
Observe the national standard for refuse disposal. /
Respectez les réglementations nationales en matière d'élimination des déchets.



Teremos todo o prazer em responder a perguntas específicas. /
We are pleased to answer any special questions you may have. /
Nous sommes à votre disposition pour tout renseignement complémentaire.

Should you require the operating instructions in one of the other European Community languages, please feel free to contact your WISKA representative.

Si vous avez besoin des instructions de mise en service dans une autre langue de l'Union Européenne, prière de contacter votre Représentant WISKA.

En översättning av denna montageoch skötselinstruktion till annat EU-språk kann vid behov beställas från er WISKA representant.

En caso necesario podrá solicitar de su representante WISKA estas instrucciones de servicio en otro idioma de la Union Europea.

Montagevejledningen kan oversættes til andre EU-sprog og rekvireres hos deres WISKA leverandør.

Se desiderate la traduzione del manuale operativo in un'altra lingua della Comunità Europea potete richiederla al vostro rappresentante WISKA.

Tarvittaessa tämän käyttöohjeen käännös on saatavissa toisella EU:n kielellä Teidän WISKA-edustajaltanne.

Indien noodzakelijk kan de vertaling van deze gebruiksinstructie in een andere EU-taal worden opgevraagd bij uw WISKA-vertegenwoordiging.



EU-TYPE EXAMINATION CERTIFICATE
(Translation)

- (2) Equipment or Protective Systems Intended for Use in Potentially Explosive Atmospheres - Directive 2014/34/EU
- (3) EU-Type Examination Certificate Number:
PTB 04 ATEX 1040 X
- (4) Product: Thread adapter type EX-KEM **/*, EX-KRM **/*
- (5) Manufacturer: WISKA Hoppmann GmbH
- (6) Address: Kisdorfer Weg 28, 24568 Kalltenkirchen, Germany
- (7) This product and any acceptable variation thereto is specified in the schedule documents therein referred to.
- (8) The Physikalisch-Technische Bundesanstalt, notified body No. 0102 in accordance with Directive 2014/34/EU of the European Parliament and of the Council, date that this product has been found to comply with the Essential Health and Safety design and construction of products intended for use in potentially explosive Annex II to the Directive.
- (9) Compliance with the Essential Health and Safety Requirements has been as EN IEC 60079-0:2018, EN IEC 60079-7:2015/A1:2018, EN 60079-3
- (10) If the sign "X" is placed after the certificate number, it indicates that the product is subject to the conditions of use specified in the schedule to this certificate.
- (11) This EU-Type Examination Certificate relates only to the design and construction of the product in accordance with the design and construction of products intended for use in potentially explosive atmospheres given in Schedule 1 of the Regulations.
- (12) The marking of the product shall include the following:

II 2 G Ex eb IIC Gb
II 2 D Ex tb IIIC Db

Konformitätsbewertungsstelle, Sektor Explosionsschutz
On behalf of PTB:

D. Markus
Dr.-Ing. D. Markus
Direktor und Präsident

EU-Type Examination Certificates without signature and official stamp shall not be valid. The only valid alteration: Extracts or alterations are subject to approval by the Physikalisch-Technische Bundesanstalt.

Physikalisch-Technische Bundesanstalt • Bundesallee 100 • 38116 Braunschweig

IECEx Certificate of Conformity

INTERNATIONAL ELECTROTECHNICAL COMMISSION
IEC Certification System for Explosive Atmospheres

for rules and details of the IECEx Scheme visit www.iecex.com

Certificate No.: **IECEx PTB 16.0026X** Page 1 of 4

Status: **Current** Issue No: 1

Date of issue: **2022-05-25**

Applicant: **WISKA Hoppmann GmbH**
Kisdorfer Weg 28
24568 Kalltenkirchen
Germany

Equipment: **Thread adapter type EX-KRM **/*, EX-KEM **/*, EX-APM **/***

Optional accessory:

Type of Protection: **"eb", "tb"**

Marking: **Ex eb IIC Gb**
Ex tb IIIC Db

Approved for issue on behalf of the IECEx Certification Body: **Dr.-Ing. Detlev Markus**

Position: **Head of Department Explosion Protection**

Signature: *D. Markus*
(for printed version)

Date: **30.05.22**
(for printed version)

1. This certificate and schedule may only be reproduced in full.
2. This certificate is not transferable and remains the property of the issuing body.
3. The status and authenticity of this certificate may be verified by visiting www.iecex.com or use of this QR Code.

Certificate issued by:
Physikalisch-Technische Bundesanstalt (PTB)
Bundesallee 100
38116 Braunschweig
Germany

UNITED KINGDOM CONFORMITY ASSESSMENT
UK-TYPE EXAMINATION CERTIFICATE

- (1) Product or Protective System Intended for use in Potentially Explosive Atmospheres UKSI 2016:1107 (as amended by UKSI 2019:696) - Schedule 3A, Part 1
- (2) UK-Type Examination Certificate No.: **UL22UKEX2674X Rev. 0**
- (3) Product: **Thread adapter type EX-KEM **/*, EX-KRM **/*, EX-APM **/***
- (4) Manufacturer: **WISKA Hoppmann GmbH**
- (5) Address: **Kisdorfer Weg 28, 24568 Kalltenkirchen, Germany**
- (6) This product and any acceptable variation thereto are specified in the schedule to this certificate and the documents therein referred to.
- (7) UL International (UK) Ltd, Approved Body number 0843, in accordance with Regulation 44 of the Equipment and Protective Systems Intended for Use in Potentially Explosive Atmospheres Regulations 2016, UKSI 2016:1107 (as amended by UKSI 2019:696), certifies that this product has been found to comply with the Essential Health and Safety Requirements relating to the design and construction of products intended for use in potentially explosive atmospheres given in Schedule 1 of the Regulations. The examination and test results are recorded in the confidential report DEPTB/ExTR16.004101.
- (8) Compliance with the Essential Health and Safety Requirements has been assured by compliance with:
EN IEC 60079-0:2018 EN IEC 60079-7:2015/A1:2018 EN 60079-31:2014
- (9) Except in respect of those requirements listed at section 19 of the schedule to this certificate.
- (10) If the sign "X" is placed after the certificate number, it indicates that the product is subject to the Specific Conditions of Use specified in the Schedule to this certificate.
- (11) This UK-TYPE EXAMINATION CERTIFICATE relates only to the design and construction of the specified product. Further requirements of the Regulations apply to the manufacturing process and supply of this product. These are not covered by this certificate.
- (12) The marking of the product shall include the following:

II 2 G Ex eb IIC Gb
II 2 D Ex tb IIIC Db

Certification Officer
Andrew Moffat

This is to certify that the sample(s) of the Product described herein ("Certified Product") has been investigated and found to conform with the Requirements indicated on this Certificate. In accordance with the UKSI Product Certification Program Requirements. This certificate and test results obtained apply only to the product variations listed herein by the Manufacturer. UL has not carried out inspection or otherwise whether the samples provided were representative of other manufactured product. UL has not established Follow-Up Service or other services for the product. The Manufacturer is not permitted to reproduce or otherwise use the product or any part of the product without UL's prior written approval. The test results may not be used, in whole or in part, in any other document without UL's prior written approval.

Date of issue: **2023-01-30**

Approved Body **UL International (UK) Ltd** Unit 1-3 Horizon Kingsland Business Park Wade Road, Basingstoke RG24 8AH, UK
Phone: +44 (0)1256 312100

Form-ULD-008123.1 - Issue 4.0

A UKAS accredited certification body No. 4705
This certificate may only be reproduced in its entirety and without any change, schedule included.



EU DECLARATION OF CONFORMITY



WISKA Hoppmann GmbH
Kisdorfer Weg 28
24568 Kalltenkirchen
Germany



KCE1-21053-0

Declares under its sole responsibility that:

Product designation: Expansion, Reducer, Adaptor
Type designation: EX-KEM **/*, EX-KRM **/*, EX-APM **/*
Description: Expansion, Reducer, Adaptor for electrical installation
Approval number/Production Quality Assessment: PTB 04 ATEX 1040 X
Notification: PTB 03 ATEX Q044

Information about the product

Marking **II 2 G Ex eb IIC Gb**
II 2 D Ex tb IIIC Db

Ambient temperature: -40°C ... +75°C

corresponds to all the relevant provisions of the directives listed below and valid harmonized and / or international and national standards - including all applicable changes at this time of issuing this document.

Regulation	Standard
2014/34/EU Equipment and protective systems intended for use in potentially explosive atmospheres (ATEX)	EN IEC 60079-0:2018 + AC:2020-02 EN IEC 60079-7:2015 + A1:2018 EN 60079-31:2014
Other Standards	EN 60423:2007
2011/65/EU Restriction of the use of certain hazardous substances in electrical and electronic equipment (RoHS)	EN IEC 63000:2018

WISKA Hoppmann GmbH
Kalltenkirchen, Germany

S. G.
Head of Engineering & Design

2023-02-24

DECLARATION OF CONFORMITY



WISKA Hoppmann GmbH
Kisdorfer Weg 28
24568 Kalltenkirchen
Germany

Authorised Representative:
WISKA UK Ltd.
Unit 7, Hurling Way
St. Columb Major Business Park
St. Columb Major, Cornwall
TR9 6SX
GREAT BRITAIN



KGB1-21053-0

Declares under its sole responsibility that:

Product designation: Expansion, Reducer, Adaptor
Type designation: EX-KEM **/*, EX-KRM **/*, EX-APM **/*
Description: Expansion, Reducer, Adaptor for electrical installation
Approval number: UL22UKEX2674X Rev. 0
Production Quality Assessment Notification: UL22UKQAN19164

Information about the product

Marking **II 2 G Ex eb IIC Gb**
II 2 D Ex tb IIIC Db

Ambient temperature: -40°C ... +75°C

corresponds to all the relevant provisions of the directives listed below and valid harmonized and / or international and national standards - including all applicable changes at this time of issuing this document.

Regulation	Standard
UKSI 2016:1107 (Equipment and Protective Systems Intended for use in Potentially Explosive Atmospheres Regulations 2016 as amended by UKSI 2019:696)	EN IEC 60079-0:2018 + AC:2020-02 EN IEC 60079-7:2015 + A1:2018 EN 60079-31:2014
Other Standards	EN 60423:2007
S.I. 2012 No. 3032 The Restriction of the Use of Certain Hazardous Substances in Electrical and Electronic Equipment Regulations 2012	EN IEC 63000:2018

WISKA Hoppmann GmbH
Kalltenkirchen, Germany

S. G.
Head of Engineering & Design

2023-02-24

WISKA UK Ltd
St. Columb Major, Great Britain

[Signature]
Authorised Representative

