



ACHTUNG!

Stromschlaggefahr

DANGER!

Electric shock hazard



Drehschalter / Rotary-Switch DIN 89322

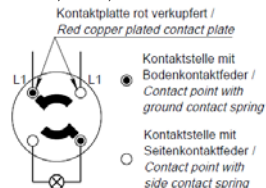
Nennstrom / Rated current: 10A

Nennspannung / Rated voltage: 250VAC

Leiterquerschnitt / conductor cross-section: max. 2,5mm²

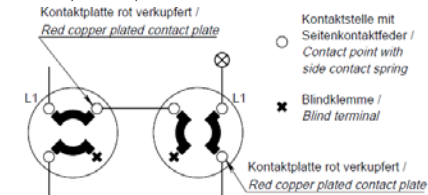


Ausschalter 2-polig / Off-Switch 2-pole;
DIN 89322 Type 1/2; WISKA Type 1842 ¹⁾
Verwendung in / use in: 1133/P, 1138/P, 1144/P,
1146/P, 105/P; COMBI[®] 304 SWITCH RS 1/2 **

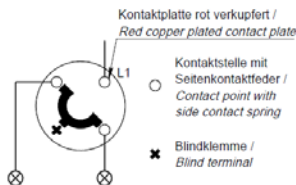


¹⁾ Anschlußplan gilt auch für Type 1842/16A /
Connection diagram also for type 1842/16A

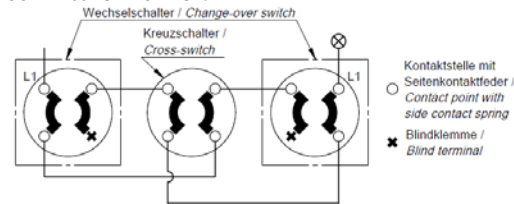
Wechselschalter 1-polig / Change-over switch 1-pole;
DIN 89322 Type 6/1; WISKA Type 1843
Verwendung in / use in: 1133/We, 1138/We, 1144/We,
1146/We, 105/We; COMBI[®] 304 SWITCH RS 6/1 **



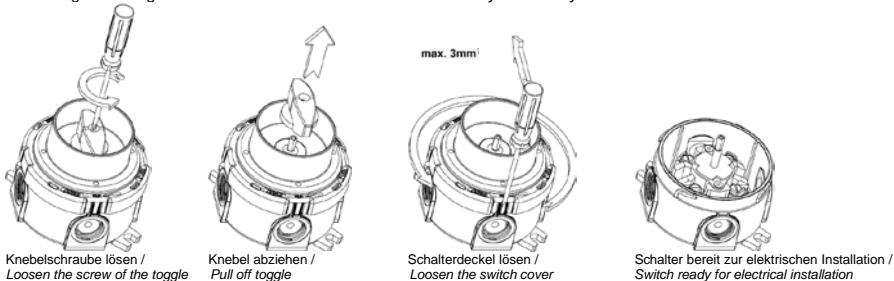
Serienschalter 1-polig / Series switch 1-pole
DIN 89322 Type 5/1; WISKA Type 1844
Verwendung in / use in: 1133*/S/10A;
COMBI[®] 304 SWITCH RS 5/1 **



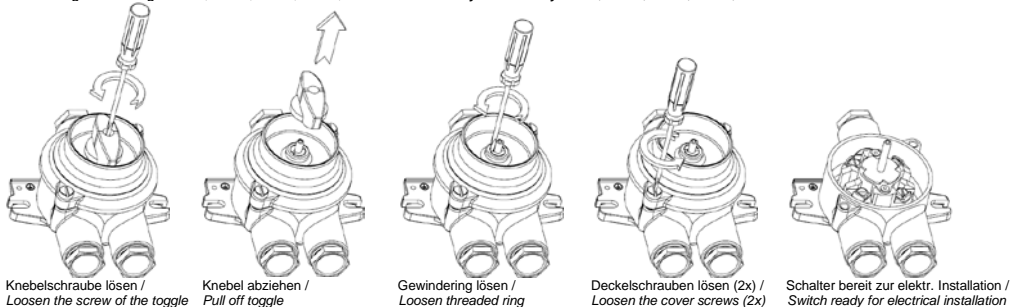
Kreuzschalter 1-polig / Cross-switch 1-pole;
DIN 89322 Type 7/1; WISKA Type 1845
Verwendung in / use in: 1133*/K/10A;
COMBI[®] 304 SWITCH RS 7/1 **



Demontage / Montage COMBI[®] 304 SWITCH RS */* ** / Disassembly / assembly COMBI[®] 304 SWITCH RS */* **



Demontage / Montage 1133, 1138, 1144, 1146, 105 / Disassembly / assembly 1133, 1138, 1144, 1146, 105



Montage in umgekehrter Reihenfolge / Assembly in reverse order